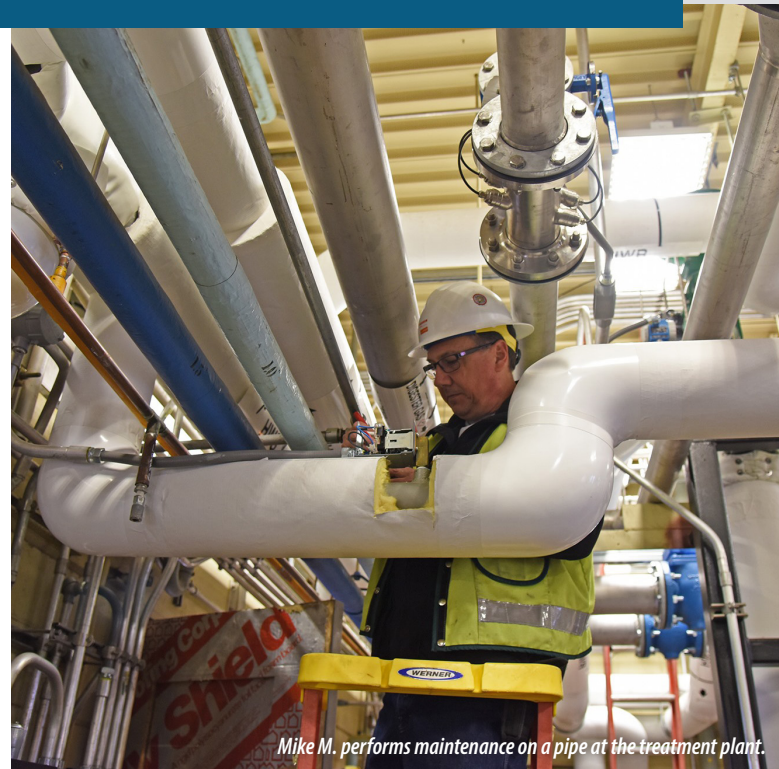


# ASSETS & INFRASTRUCTURE

Our fourth key outcome is to maximize reliability and useful life of regional assets and infrastructure.

The MWMC is able to provide high-quality wastewater services by having reliable and resilient regional assets and infrastructure. This is accomplished by employing industry best practices in asset management, strategic budgeting, and a computerized maintenance management system.

Through coordinated maintenance activities and capital planning efforts, the MWMC continues to make sound investments to construct and upgrade facilities to meet anticipated growth in our service area.



Mike M. performs maintenance on a pipe at the treatment plant.



Wastewater Operator Barb C. operates a crane.

## FOCUS AREAS

-  **PREVENTATIVE MAINTENANCE**
-  **LOW CORRECTIVE MAINTENANCE**
-  **LOW EMERGENCY MAINTENANCE**
-  **ASSET MANAGEMENT PROCESSES**
-  **RESILIENCY PLAN**