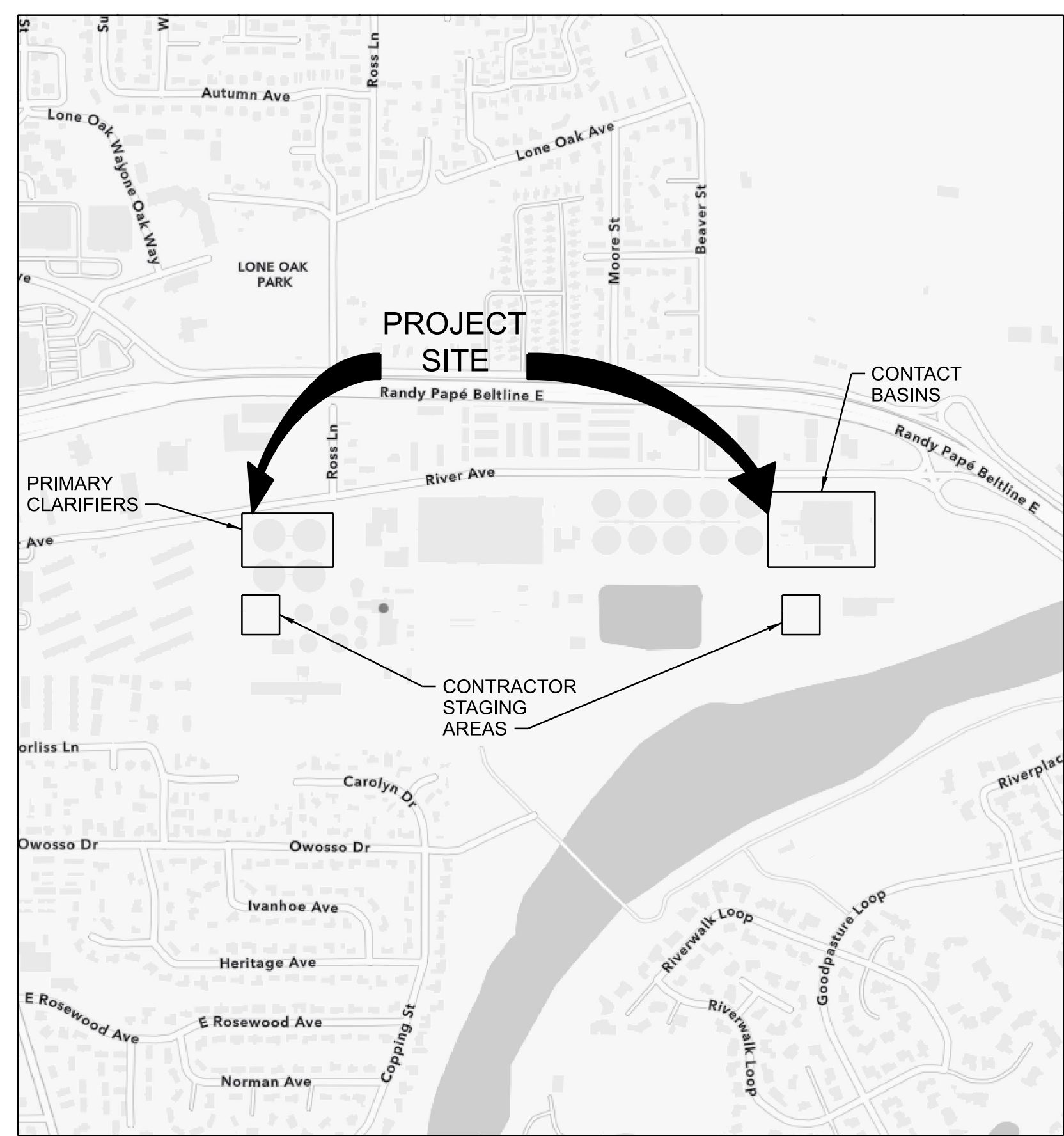


METROPOLITAN WASTEWATER MANAGEMENT COMMISSION

PRIMARY CLARIFIER AND FINAL TREATMENT STRUCTURAL REPAIR

100% DESIGN SUBMITTAL
MARCH 2026

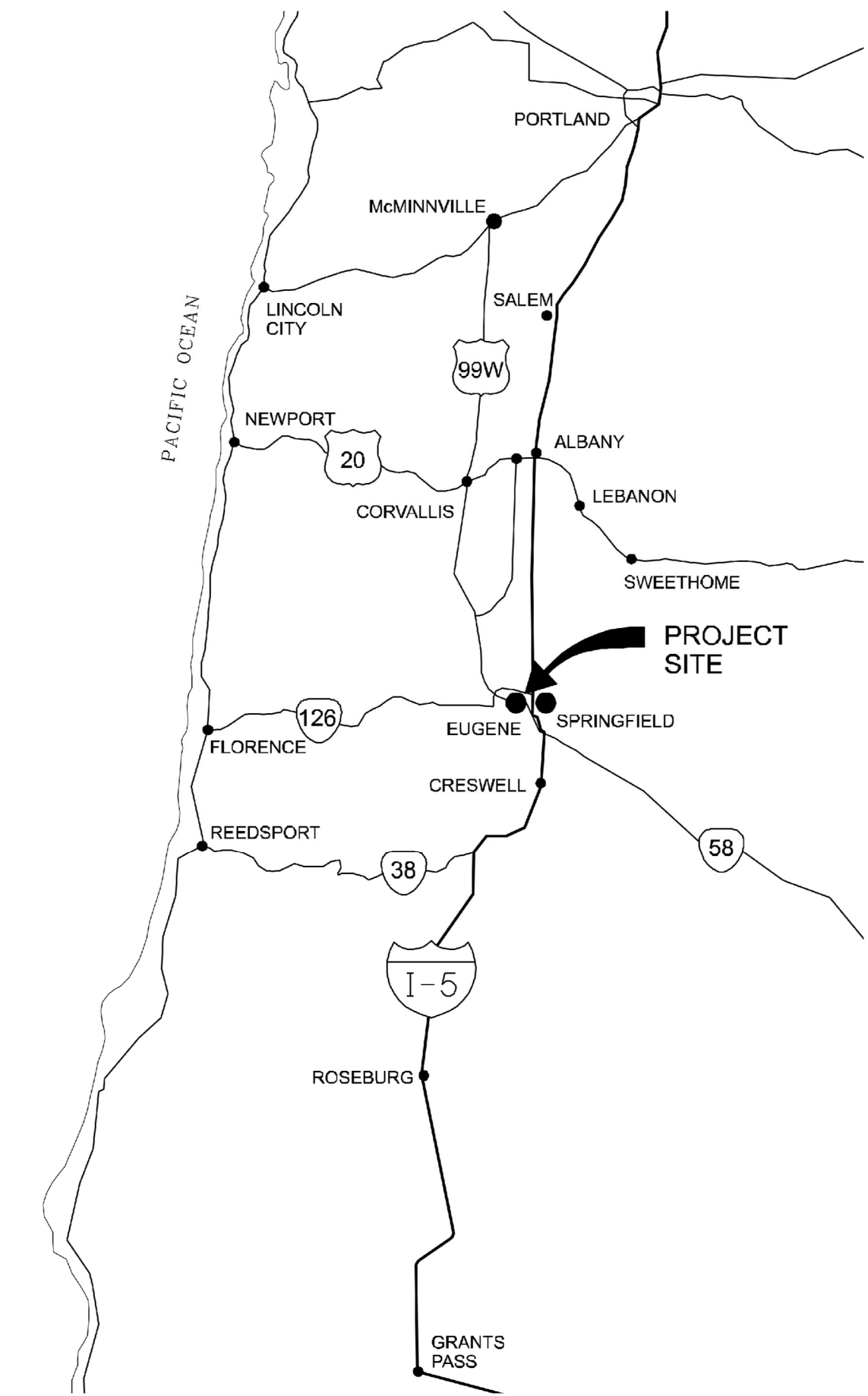


LOCATION MAP

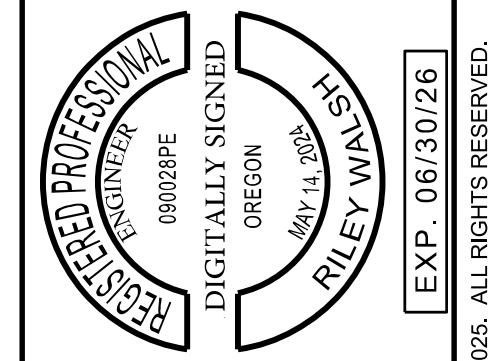
Metropolitan Wastewater MANAGEMENT COMMISSION



partners in wastewater management



VICINITY MAP



NO.	DATE	REVISION	CHK	DR	BY
					R WALSH

P80118
MWMC PRIMARY CLARIFIER AND FINAL TREATMENT STRUCTURAL REPAIR
METROPOLITAN WASTEWATER MANAGEMENT COMMISSION
EUGENE, OREGON

Jacobs
GENERAL
COVER SHEET, LOCATION, AND VICINITY MAP

VERIFY SCALE	
BAR IS ONE INCH ON ORIGINAL DRAWING.	
DATE	03/24/2026
PROJ	P80118
DWG	001-G-0001
SHEET	1 of 17

100% DESIGN SUBMITTAL

Table of abbreviations with columns for symbol, description, and units. Includes categories like SYMBOLS, CEMENT MORTAR LINED AND TAPE WRAPPED, FILTER EFFLUENT, etc.

Professional Engineer seal for Riley W Walsh, Oregon, No. 090028PE, Exp. 06/30/26. Includes project title 'P80118', 'GENERAL ABBREVIATIONS', and '100% DESIGN SUBMITTAL'.

DRAWING NUMBERING LEGEND

EXAMPLE: 031-S-2001

FACILITY / AREA NUMBER DISCIPLINE(S) / TYPE CODE DRAWING LEVEL OR TYPE CODES

FACILITY / AREA NUMBER	DISCIPLINE / TYPE CODES	DRAWING LEVEL / TYPE CODES
001 - GENERAL 031 - PRIMARY CLARIFIERS 051 - FINAL TREATMENT BASIN	D - PROCESS DX - PROCESS DEMOLITION G - GENERAL S - STRUCTURAL SX - STRUCTURAL DEMOLITION	2000 - PLANS 3000 - SECTIONS 5000 - DETAILS

DESIGN DETAIL DESIGNATION

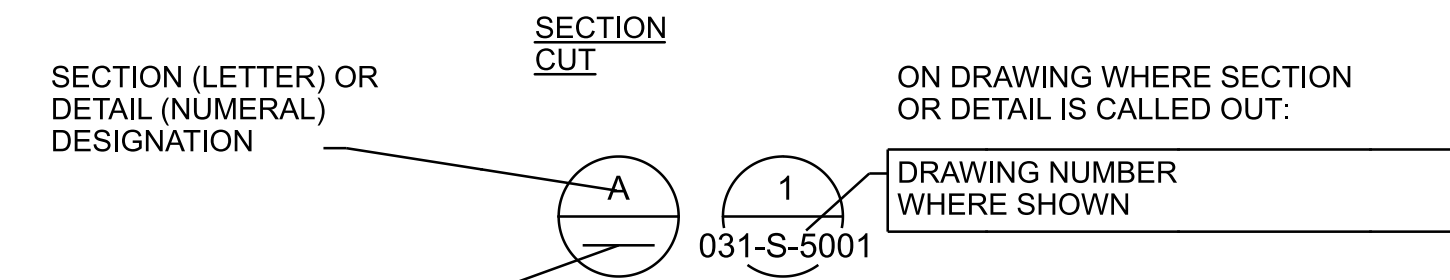
DESIGN DETAIL DESIGNATION
(SHOWN IN DESIGN DETAIL DOCUMENT)

0330-017

NOTES:

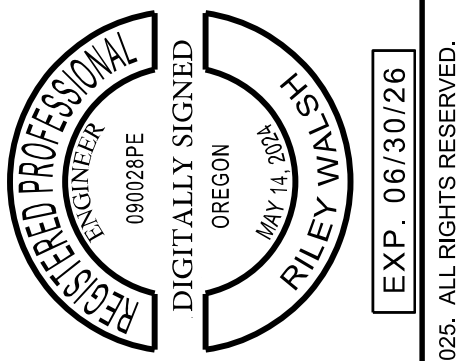
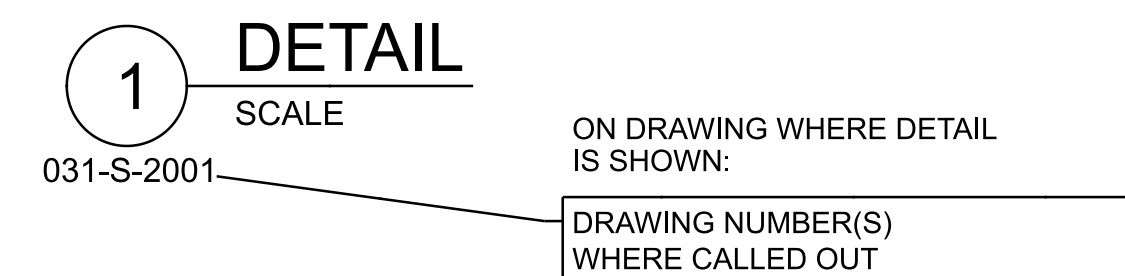
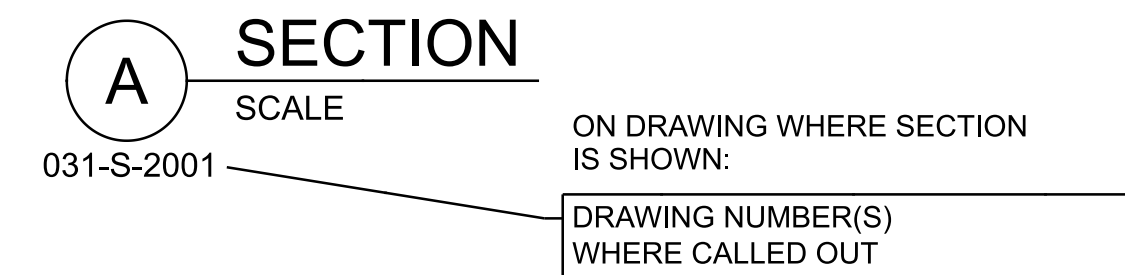
- ALL DESIGN DETAILS ARE TYPICAL AND MUST BE USED IF DESIGN DETAIL DESIGNATION IS SHOWN.
- THE TERM STANDARD DETAIL, OR A FORM OF IT, IS SYNONYMOUS WITH DESIGN DETAIL AND REFERS TO THE DESIGN DETAILS FOUND IN THIS SET OF CONTRACT DOCUMENTS.
- THE DESIGN DETAILS REPRESENT THE CHARACTER AND NATURE OF THE WORK REQUIRED THROUGHOUT THE PROJECT. ALL ASSOCIATED WORK MUST BE IN ACCORDANCE WITH THE DESIGN DETAILS SHOWN WHETHER THE DETAILS ARE SPECIFICALLY REFERENCED OR NOT.

SECTION AND DETAIL DESIGNATIONS



DRAWING NUMBER (REPLACED WITH A LINE IF SHOWN ON SAME SHEET)

SECTION CALLOUT DETAIL CALLOUT



NO.	DATE	REVISION	CHK	APVD
				R WALSH
				S WEBER
				P DANKO
				P DANKO
				DR
				DSGN

P80118

MWMC PRIMARY CLARIFIER AND FINAL TREATMENT STRUCTURAL REPAIR METROPOLITAN WASTEWATER MANAGEMENT COMMISSION

EUGENE, OREGON

Jacobs

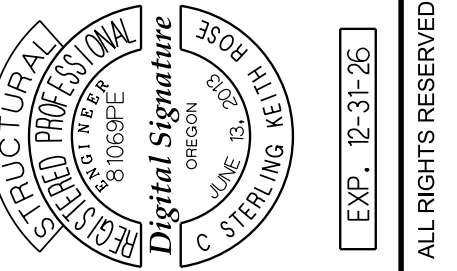
GENERAL LEGEND

VERIFY SCALE	
BAR IS ONE INCH ON ORIGINAL DRAWING.	
DATE	03/24/2026
PROJ	P80118
DWG	001-G-0005
SHEET	5 of 17

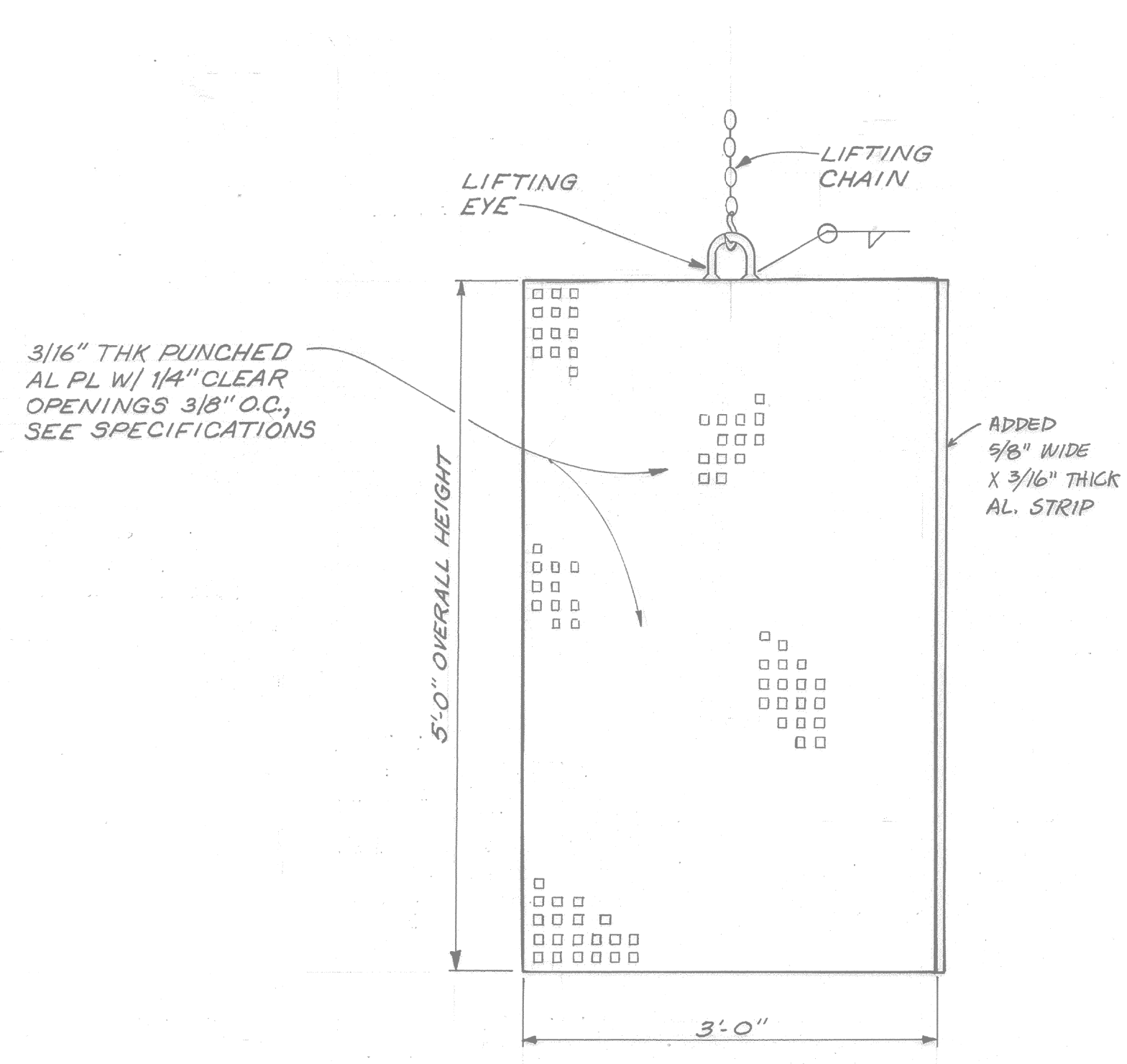
100% DESIGN SUBMITTAL

GENERAL SHEET NOTES

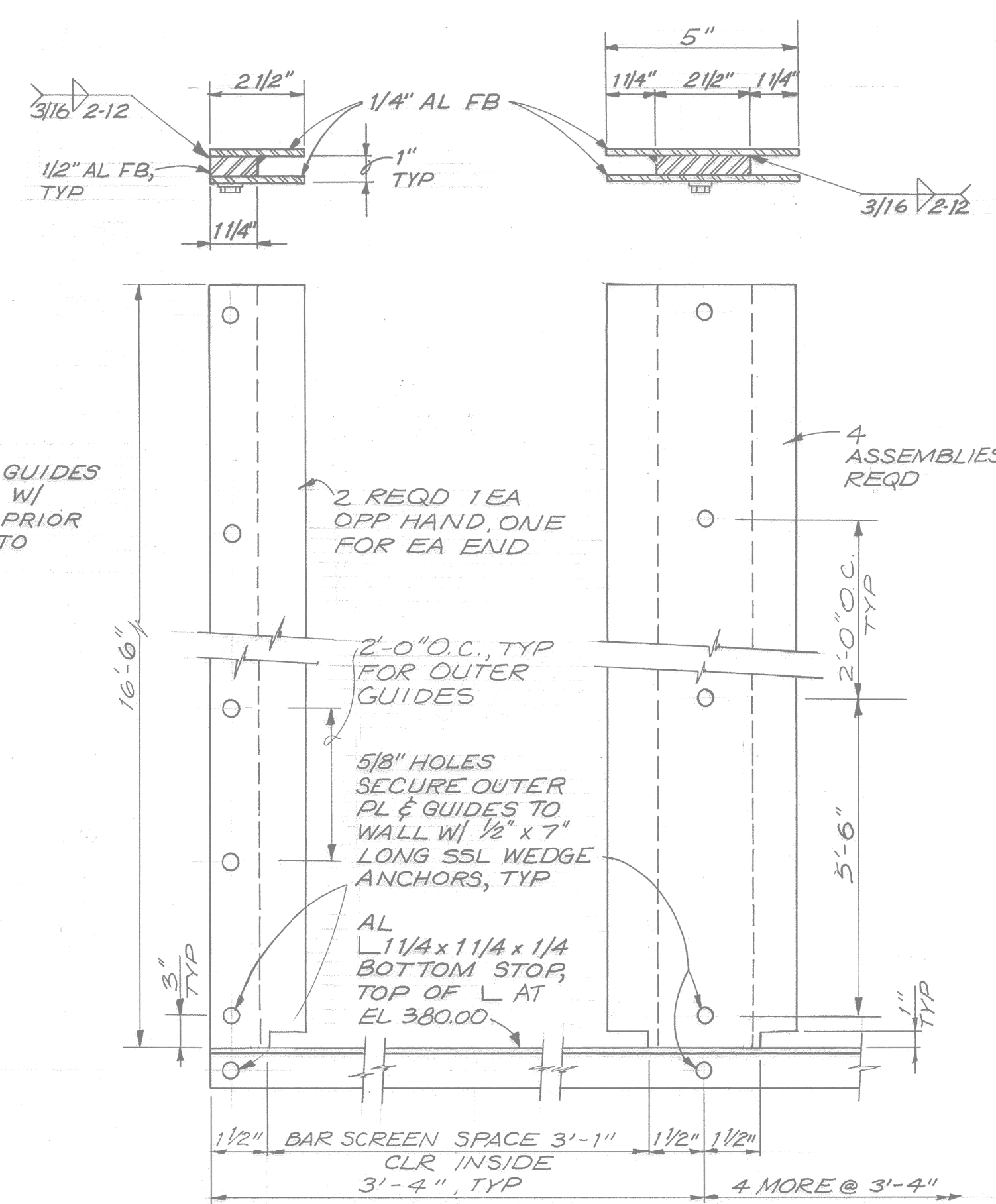
- REMOVE AND REPLACE SCREEN AND SCREEN GUIDES WITH NEW 316 STAINLESS STEEL SCREEN AND 316 STAINLESS STEEL GUIDES.



© JACOBS 2025. ALL RIGHTS RESERVED.

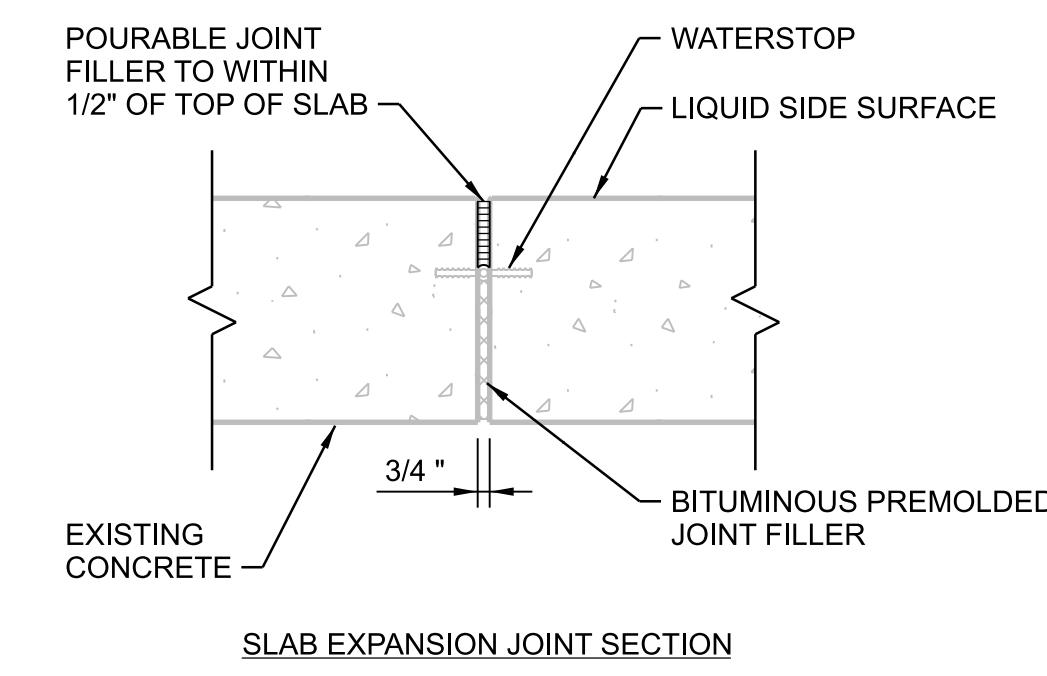


NOTE:
COAT BACKS OF GUIDES
IN ACCORDANCE W/
SPECIFICATION PRIOR
TO ATTACHING TO
CONCRETE.



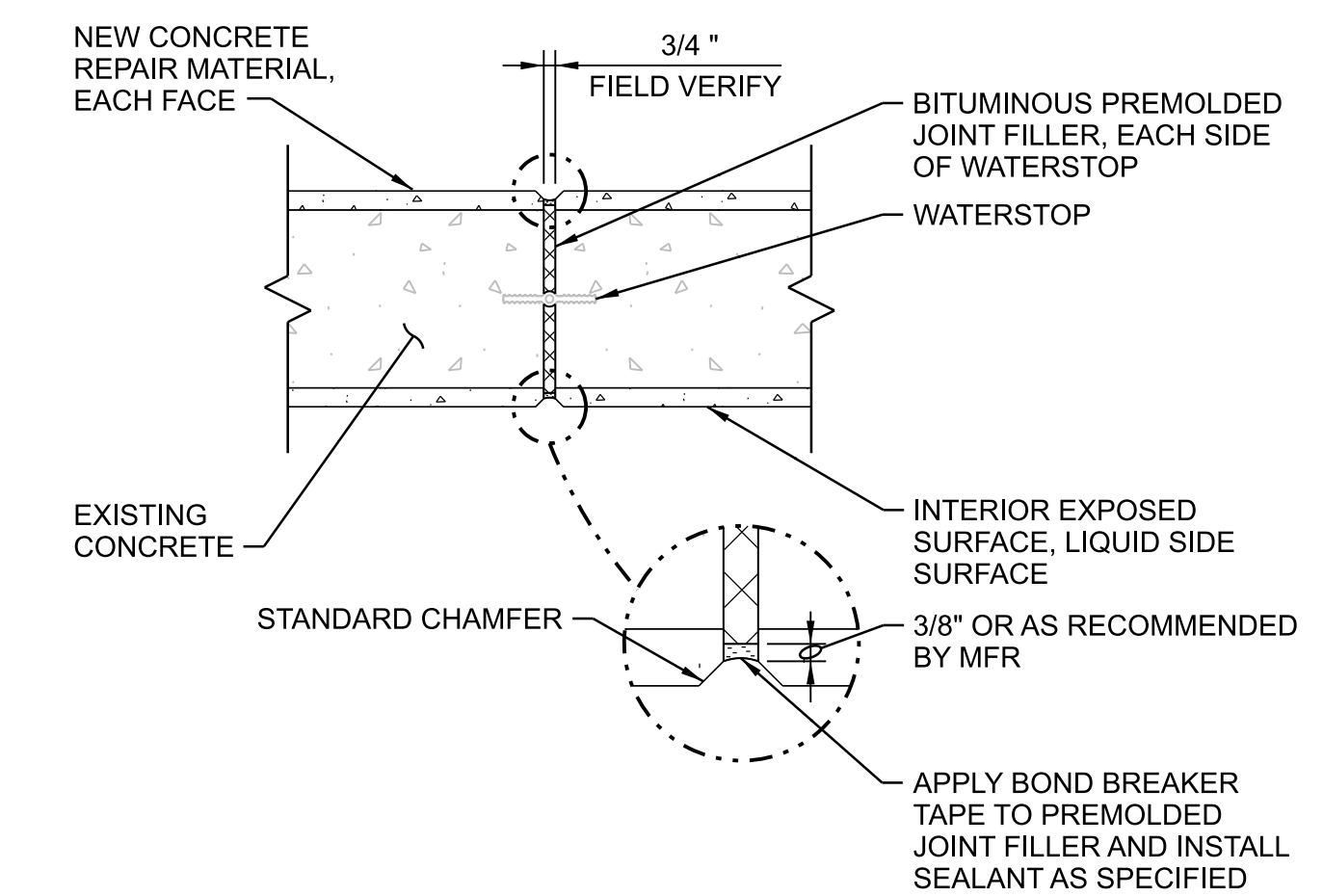
- NOTES:
- THIS DETAIL DEPICTS THE ORIGINAL CONSTRUCTION OF THE SCREENS FOR REFERENCE.
 - NEW CONSTRUCTION MAY MATCH ORIGINAL CONSTRUCTION WITH THE EXCEPTION THAT MATERIAL IS TO BE TYPE 316 (316L FOR WELDED) STAINLESS STEEL, NOT ALUMINUM.
 - ALTERNATE DESIGN THAT PROVIDES THE SAME FUNCTIONALITY MAY BE SUBMITTED FOR OWNER'S CONSIDERATION.

1 DETAIL
1"=1'-0"
051-S-2001I



- NOTE:
- POURABLE JOINT FILLER SPECIFIED WILL LIKELY NOT COMPLY WITH THE MANUFACTURER'S DIMENSIONAL REQUIREMENTS AS A SEALANT. WHILE ACTING SOMEWHAT AS A SEALANT, THE INTENT IS TO FILL THE ENTIRE DEPTH TO THE WATERSTOP.

2 DETAIL
1"=1'-0"
051-S-2001I



3 DETAIL
1"=1'-0"
051-S-2001I

P80118

MWMC PRIMARY CLARIFIER AND FINAL TREATMENT STRUCTURAL REPAIR METROPOLITAN WASTEWATER MANAGEMENT COMMISSION EUGENE, OREGON

JACOBS
FINAL TREATMENT STRUCTURAL CONTACT BASIN DETAILS

VERIFY SCALE	BAR IS ONE INCH ON ORIGINAL DRAWING.
DATE	03/24/2026
PROJ	P80118
DWG	051-S-5001
SHEET	16 of 17

100% DESIGN SUBMITTAL

