

# TRUSS SUPPORTED FORMED PLANK FLAT COVER FOR METROPOLITAN WASTEWATER MANAGEMENT COMMISSION ODOROUS AIR TREATMENT EXPANSION EUGENE, OR

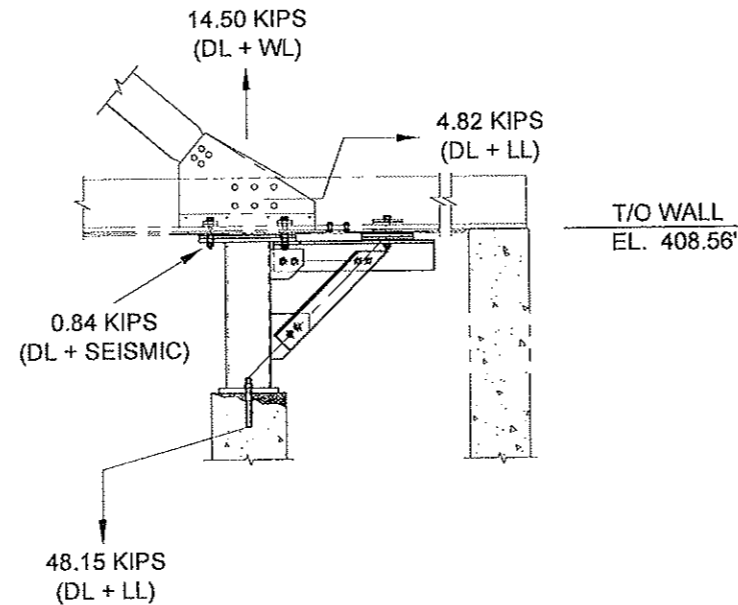
## SUBMITTAL FOR TRUSS SUPPORTED FORMED PLANK FLAT COVER FOR PRIMARY CLARIFIERS #1 AND #3

### GENERAL NOTES

1. TOP SURFACE OF PANELS AND ALL TRUSS MEMBERS WILL HAVE A M-42 SANDBLASTED FINISH. UNLESS SPECIFICALLY NOTED, ALL OTHER ALUMINUM MATERIAL IS MILL FINISH.
2. UNLESS SPECIFICALLY NOTED, OPENINGS IN PANELS FOR APPURTENANCE INSTALLATION ARE FIELD CUT.
3. CLEAN SURFACES BEFORE APPLYING SEALANT. TOOL OFF EXCESS SEALANT.
4. NO SUBSTITUTIONS, REPAIRS, OMISSIONS OR ALTERATIONS SHALL BE MADE TO PARTS FURNISHED WITHOUT WRITTEN APPROVAL FROM CONSERVATEK.
5. UNLESS OTHERWISE NOTED, ALL FASTENERS AND ANCHOR BOLTS TO BE 316 STAINLESS STEEL.
6. INSTALLATION CONTRACTOR TO COORDINATE PLACEMENT OF ALL FIELD CUT PANEL PENETRATIONS WITH OWNER PRIOR TO APPURTENANCE INSTALLATION.
7. CUT EDGES MUST BE TRUE, SMOOTH AND FREE FROM EXCESSIVE BURRS OR RAGGED BREAKS.
8. ALL CORNERS OF CUTS MUST HAVE A MIN. RADIUS OF 0.25 IN.
9. VERTICAL LEGS, CROSS STIFFENERS AND END FLASHING SHALL NOT BE CUT. IF FIELD CUT PANEL PENETRATIONS ARE LOCATED SUCH THAT A VERTICAL LEG, END FLASHING OR CROSS STIFFENERS MUST BE CUT. CONTACT CONSERVATEK FOR FURTHER INSTRUCTIONS BEFORE MODIFYING PANEL.
10. ALL POST-INSTALLED CONCRETE ANCHORS PROVIDED BY CONSERVATEK ARE HILTI BRAND ANCHORS. ANCHORS MAY NOT BE SUBSTITUTED WITHOUT WRITTEN APPROVAL FROM CONSERVATEK'S ENGINEERING DEPARTMENT.
11. FIELD TO ENSURE THAT THE ENDS OF THE PANELS ARE SECURE AT ALL TIMES DURING INSTALLATION TO PREVENT THE PANELS FROM SLIDING INTO THE BASIN PRIOR TO THE ANCHOR BOLT AND Z-FLASHING INSTALLATION.
12. VENTLON ISOLATION GASKET OR NEOPRENE GASKETING SHALL BE PLACE BETWEEN ALUMINUM AND CONCRETE IN ALL LOCATIONS WHERE ALUMINUM COMES IN CONTACT WITH CONCRETE.

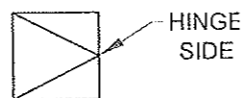
### DESIGN CRITERIA & WEIGHTS

1. SEE DESIGN CALCULATIONS FOR DESIGN LOADS.



### ABBREVIATION KEY

ALUM. = ALUMINUM	NOM. = NOMINAL
CL = CENTERLINE	PLF = PER LINEAR FOOT
DT'L = DETAIL	SIM. = SIMILAR
EX. = EXISTING	S.S. = STAINLESS STEEL
F/S = FAR SIDE	S.T.S. = SELF-TAPPING SCREW
HHB = HEX HEAD BOLT	THK. = THICK
LG. = LONG	TYP = TYPICAL
MAX. = MAXIMUM	U.N.O. = UNLESS OTHERWISE NOTED
MIN. = MINIMUM	WD. = WIDE
N/S = NEAR SIDE	w/ = WITH



**ACCESS HATCH  
HINGE ORIENTATION**

**ISSUED FOR  
APPROVAL**

TABLE OF CONTENTS		
DWG NO.	REV NO.	DRAWING TITLE
00	0	COVER PAGE
01A	0	CLARIFIER #1 PANEL LAYOUT
01B	0	CLARIFIER #3 PANEL LAYOUT
02A	0	CLARIFIER #1 TRUSS LAYOUT
02B	0	CLARIFIER #3 TRUSS LAYOUT
02C	0	OUT OF PLANE BRACING LAYOUT
03A	0	LAYOUT - SECTIONS & DETAILS I
03B	0	LAYOUT - SECTIONS & DETAILS II
03C	0	LAYOUT - SECTIONS & DETAILS III
03D	0	LAYOUT - SECTIONS & DETAILS IV
03E	0	LAYOUT - SECTIONS & DETAILS V
03F	0	LAYOUT - SECTIONS & DETAILS VI
04A	0	TRUSS - SECTIONS & DETAILS I
04B	0	TRUSS - SECTIONS & DETAILS II
04C	0	TRUSS - SECTIONS & DETAILS III
04D	0	TRUSS - SECTIONS & DETAILS IV
04E	0	TRUSS - SECTIONS & DETAILS V
04F	0	TRUSS - SECTIONS & DETAILS VI
05A	0	FLAT COVER - SECTIONS & DETAILS I
05B	0	FLAT COVER - SECTIONS & DETAILS II
05C	0	FLAT COVER - SECTIONS & DETAILS III
06A	0	TOP MOUNT HATCH DETAIL I
06B	0	TOP MOUNT HATCH DETAIL II
06C	0	TOP MOUNT HATCH DETAIL III
07A	0	FLANGE NOZZLE DETAIL
08A	0	PIPE FLASHING DETAIL

CONSERVATEK INDUSTRIES, INC.  
498 LOOP 336 EAST, CONROE, TEXAS 77305

THESE DRAWINGS ARE THE PROPERTY OF CONSERVATEK. THE INFORMATION CONTAINED ON THESE DRAWINGS IS PROPRIETARY AND IS NOT TO BE REPRODUCED OR DISTRIBUTED WITHOUT WRITTEN PERMISSION OF CONSERVATEK.

Drawn By	Checked By	Date	Scale	Rev.	Contract No.	Series	Dwg No.
JJG	MJA	06/25/09	NTS	0	209047-48	A	00

TRUSS SUPPORTED FPFC  
COVER PAGE

ODOROUS AIR TREATMENT EXPANSION  
EUGENE, OR

Rev. By	Chk.	Revision Comment	Date	Date	Drawing Issued For	APPROVAL

14'-5" x 10'-0" AREA AT CENTERWELL TO BE INCLUDED AS PART OF COVER SUBMITAL. EXISTING PLATFORM TO BE REMOVED; NEW COVER AT THIS LOCATION DROPPED TO ALLOW ACCESS AT OIL PAN/SUMP AREA FOR MAINTENANCE

TOP MOUNT FORMED PLANK COVER PANELS (TOP SURFACE M42 FINISH)

14"Ø FLANGE NOZZLE FOR DUCT CONNECTION (DUCTWORK BY OTHERS) (TYP 7) REF: 20/07A

GAUGE COCK PENETRATION TYP. 3 (GAUGE COCK BY OTHERS)

GENERAL NOTES:  
 1.) COVER MANUFACTURER SHALL PROVIDE SAFETY SIGNS WHICH CAN ATTACH TO THE COVERS WARNING STAFF/VISITORS OF DANGER WHEN THE COVER IS OPEN.  
 2.) PROVIDE STATEMENT CONFIRMING COVER MFR HAS SURVEYED TANK.

MOVE AND DELETE HATCHES AS SHOWN

27" x 27"

18" x 24" TOP MOUNT HATCH (TYP. 10) REF: 17/06B

45" x 45" TOP MOUNT HATCH (TYP. 3) REF: 16/06A

VERIFY SAFETY TIE-OFF POINTS CAN BE PROVIDED AT 20'-0" OC AT EVERY OTHER TRUSS. PROVIDE DETAIL, TYP.

2" UTILITY PIPE PENETRATIONS DEKTITE SEALED (TYP 4) REF: 21/08A

BACKDRAFT DAMPER CURB (DAMPER AND DUCTWORK BY OTHERS) PLEASE PROVIDE DAMPER CURB INFORMATION

14'-5" x 10'-0" CLEAR OPENING AT CENTER OF TANK PLATFORM BY OTHERS

NOTE: CUSTOMER TO CONFIRM LOCATIONS FOR HATCHES AND NOZZLES.

PRIMARY CLARIFIER #1

317.25 PLF (MAX.) VERTICAL LOAD APPLIED BY PANELS

CL TANK

27" x 27" TOP MOUNT HATCH (TYP. 67) REF: 16/06A

HANDRAIL (TYP 3 PLACES) REF: 19/06C

72" x 72" DOUBLE LEAF HATCH TYP 2 REF: 18/06C

TRUSS (TYP. 8)

PROVIDE LADDER/SUPPORT FRAMING PER DET. B/S 8

1 (TYP.) 03A

SCUM BOX CENTER LINE

CL TANK

MOVE AND DELETE HATCHES AS SHOWN

27" x 27"

3" 3003-H22 ALUM. CHECKERED 16 PLATE FLASHING REF: 5/03C CONTRACTOR TO VERIFY HATCH ABOVE SCUM BOX IS ALIGNED CORRECTLY

104" x 128" DOUBLE LEAF HATCH REF: 18/06C

MOVE AND DELETE HATCHES AS SHOWN

PROVIDE LADDER/SUPPORT FRAMING PER DET. B/S 8

N 05B (TYP.)

15 05A (TYP.)

ISSUED FOR APPROVAL

**CONSERVATEK**  
 CONSERVATEK INDUSTRIES, INC.  
 498 LOOP 336 EAST, CONROE, TEXAS 77305

THESE DRAWINGS ARE THE PROPERTY OF CONSERVATEK. THE INFORMATION CONTAINED ON THESE DRAWINGS IS PROPRIETARY AND IS NOT TO BE REPRODUCED OR DISTRIBUTED WITHOUT WRITTEN PERMISSION OF CONSERVATEK.

Drawn By: J J G  
 Checked By: M/A  
 Date: 06/25/09  
 Scale: NTS  
 Rev: 0  
 Contract No: 209047  
 Series: A  
 Dwg No: 01A

TRUSS SUPPORTED FPFC CLARIFIER #1 PANEL LAYOUT	
Location: ODOROUS AIR TREATMENT EXPANSION EUGENE, OR	
Dwg. Title:	
Date:	
Revision Comment:	
Rev. By:	Chk.
Drawing Issued For	
APPROVAL	



14'-5" x 10'-0" AREA AT CENTERWELL TO BE INCLUDED AS PART OF COVER SUBMITTAL. EXISTING PLATFORM TO BE REMOVED; NEW COVER AT THIS LOCATION DROPPED TO ALLOW ACCESS AT OIL PAN/SUMP AREA FOR MAINTENANCE.

TOP MOUNT FORMED PLANK COVER PANELS (TOP SURFACE M42 FINISH)

14"Ø FLANGE NOZZLE FOR DUCT CONNECTION (DUCTWORK BY OTHERS) (TYP 7) REF: 20/07A

GAUGE COCK PENETRATION TYP. 3 (GAUGE COCK BY OTHERS)

**GENERAL NOTES:**

1.) COVER MANUFACTURER SHALL PROVIDE SAFETY SIGNS WHICH CAN ATTACH TO THE COVERS WARNING STAFF/VISITORS OF DANGER WHEN THE COVER IS OPEN.

MOVE AND DELETE HATCHES AS SHOWN

27" x 27"

18"x24" TOP MOUNT HATCH (TYP. 10) REF: 17/06B

45"x45" TOP MOUNT HATCH (TYP. 3) REF: 16/06A

2" UTILITY PIPE PENETRATIONS DEKITE SEALED (TYP 4) REF: 21/08A

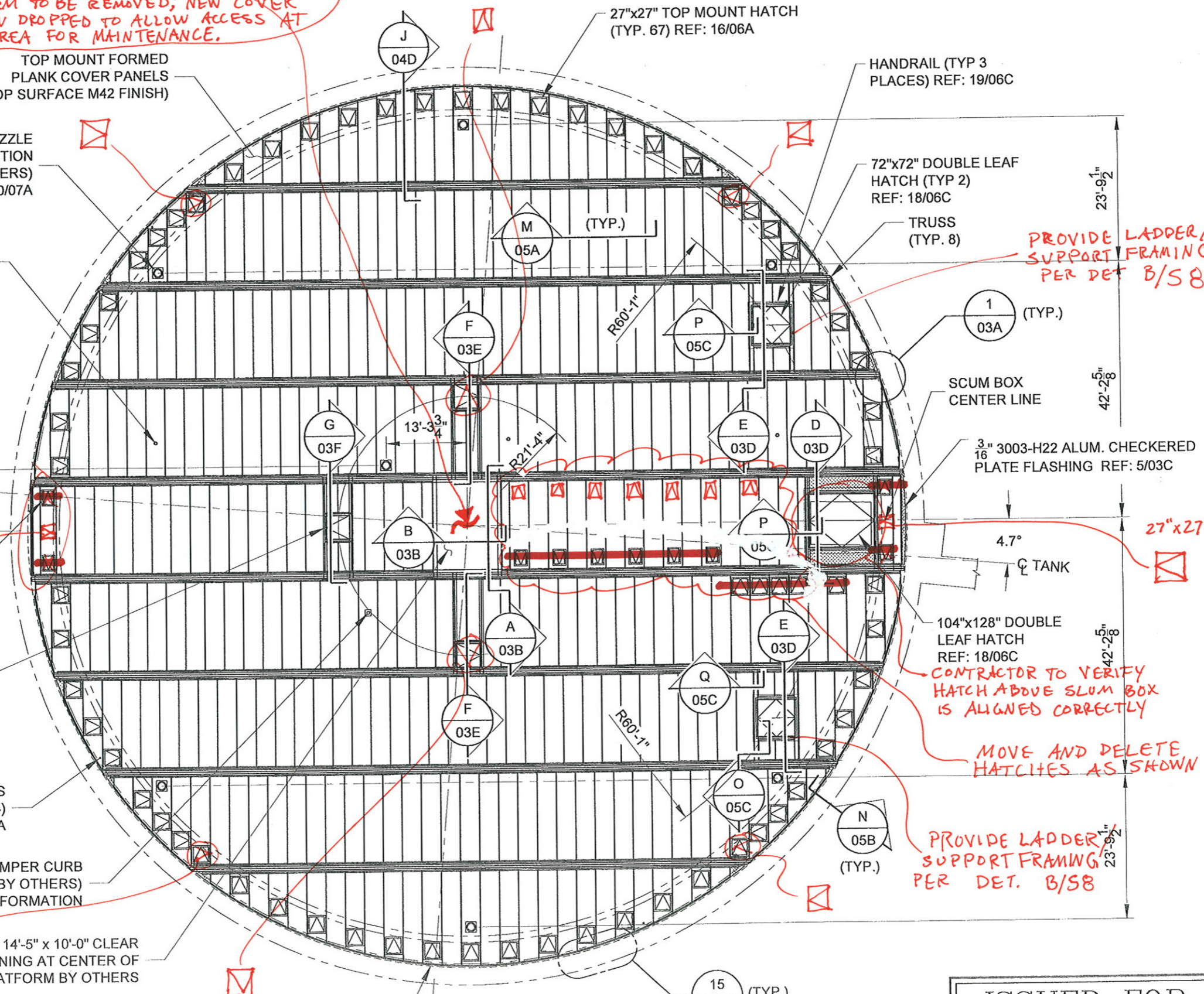
BACKDRAFT DAMPER CURB (DAMPER AND DUCTWORK BY OTHERS) PLEASE PROVIDE DAMPER CURB INFORMATION

14'-5" x 10'-0" CLEAR OPENING AT CENTER OF TANK PLATFORM BY OTHERS

NOTE: CUSTOMER TO CONFIRM LOCATIONS FOR HATCHES AND NOZZLES.

317.25 PLF (MAX.) VERTICAL LOAD APPLIED BY PANELS

**PRIMARY CLARIFIER #3**



27"x27" TOP MOUNT HATCH (TYP. 67) REF: 16/06A

HANDRAIL (TYP 3 PLACES) REF: 19/06C

72"x72" DOUBLE LEAF HATCH (TYP 2) REF: 18/06C

TRUSS (TYP. 8)

PROVIDE LADDER/SUPPORT FRAMING PER DET. B/S8

1 (TYP.) 03A

SCUM BOX CENTER LINE

3" 3003-H22 ALUM. CHECKERED PLATE FLASHING REF: 5/03C

4.7° TANK

104"x128" DOUBLE LEAF HATCH REF: 18/06C

CONTRACTOR TO VERIFY HATCH ABOVE SLUM BOX IS ALIGNED CORRECTLY

MOVE AND DELETE HATCHES AS SHOWN

PROVIDE LADDER/SUPPORT FRAMING PER DET. B/S8

N (TYP.) 05B

15 (TYP.) 05A

**CONSERVATEK**  
CONSERVATEK INDUSTRIES, INC.  
498 LOOP 336 EAST • CONROE, TEXAS 77305

THESE DRAWINGS ARE THE PROPERTY OF CONSERVATEK. THE INFORMATION CONTAINED ON THESE DRAWINGS IS PROPRIETARY AND IS NOT TO BE REPRODUCED OR DISTRIBUTED WITHOUT WRITTEN PERMISSION OF CONSERVATEK.

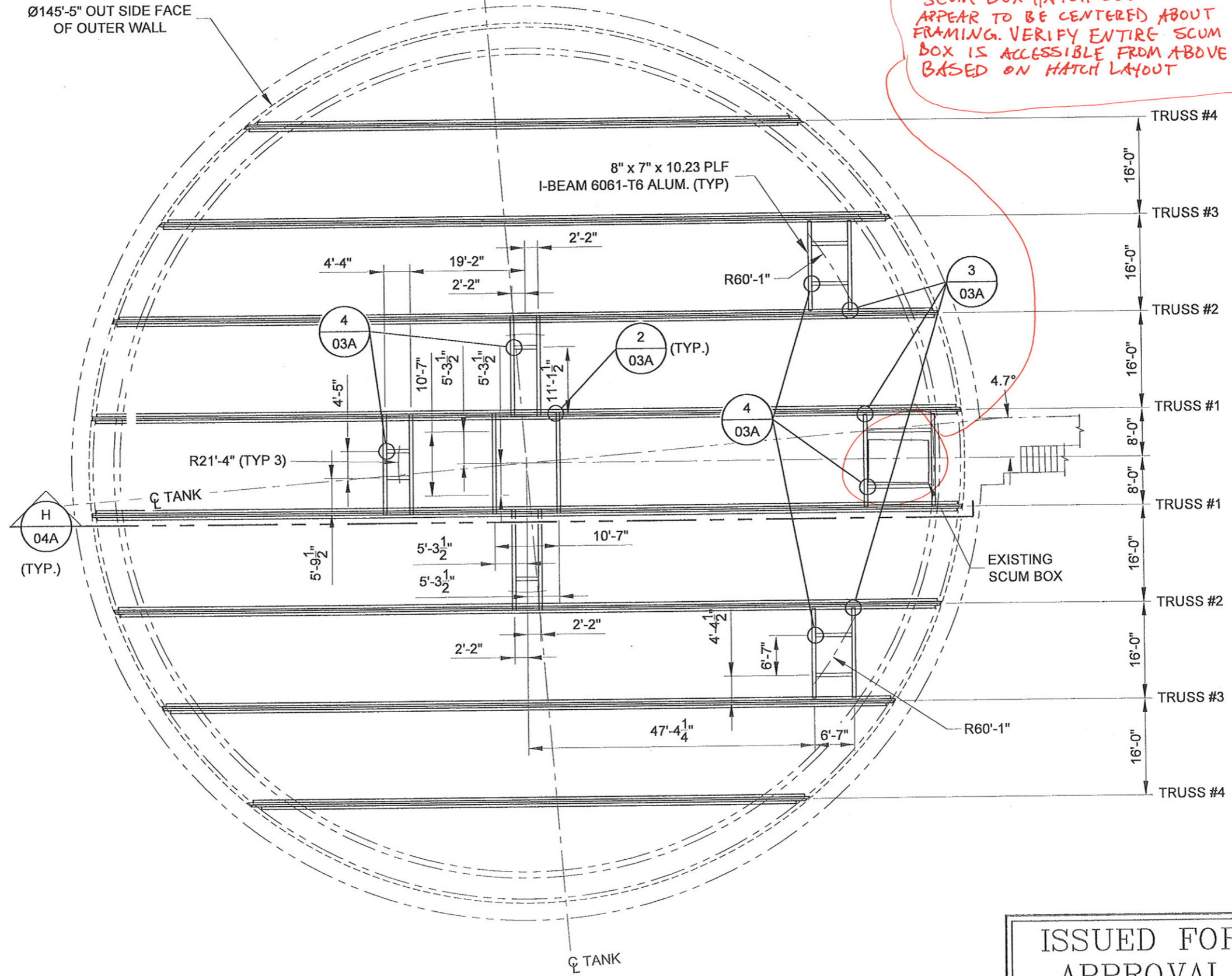
Drawn By	JJG	Date	06/25/09	Scale	NTS	Rev.	0	Contract No.	209048	Series	A	Dwg No.	01B
Checked By	MJA												

Dwg. Title: TRUSS SUPPORTED FPFC CLARIFIER #3 PANEL LAYOUT

Location: ODOROUS AIR TREATMENT EXPANSION  
EUGENE, OR

Rev.	By	Chk.	Revision Comment	Date	Date	Drawing Issued For
					6/30/09	APPROVAL

ISSUED FOR APPROVAL



SCUM BOX HATCH DOES NOT APPEAR TO BE CENTERED ABOUT FRAMING. VERIFY ENTIRE SCUM BOX IS ACCESSIBLE FROM ABOVE BASED ON HATCH LAYOUT

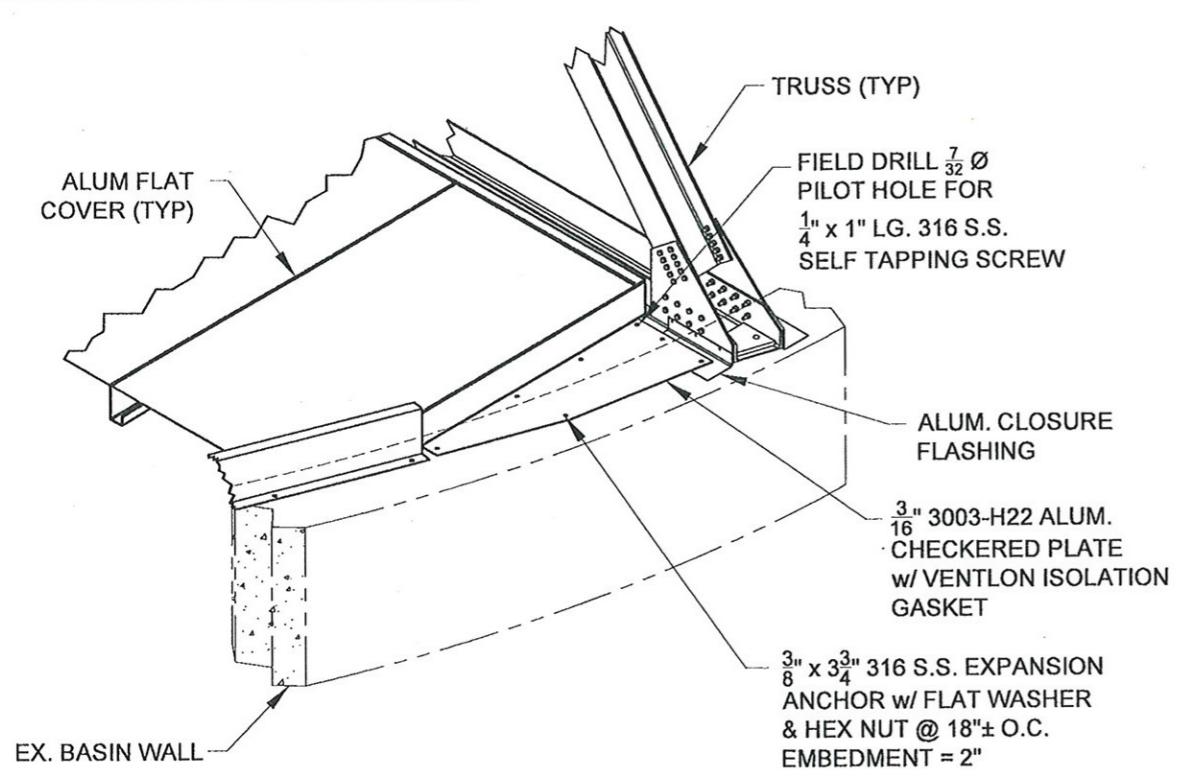
PRIMARY CLARIFIER #1

ISSUED FOR APPROVAL

<p>CONSERVATEK INDUSTRIES, INC. 498 LOOP 336 EAST, CONROE, TEXAS 77305</p>		<p>THESE DRAWINGS ARE THE PROPERTY OF CONSERVATEK. THE INFORMATION CONTAINED ON THESE DRAWINGS IS PROPRIETARY AND IS NOT TO BE REPRODUCED OR DISTRIBUTED WITHOUT WRITTEN PERMISSION OF CONSERVATEK.</p>	
Rev. No.	Dwg. No.	Contract No.	Series
02A	A	209047	A
Rev.	Scale	Date	Checked By
0	NTS	06/25/09	M/LA
Drawn By	Date	Checked By	Date
JJG		M/LA	06/25/09
<p>TRUSS SUPPORTED FPFC CLARIFIER #1 TRUSS LAYOUT</p>		<p>Location: ODOROUS AIR TREATMENT EXPANSION EUGENE, OR</p>	
Rev.	By	Chk.	Date
			6/25/09
<p>APPROVAL</p>		<p>Drawing Issued For</p>	



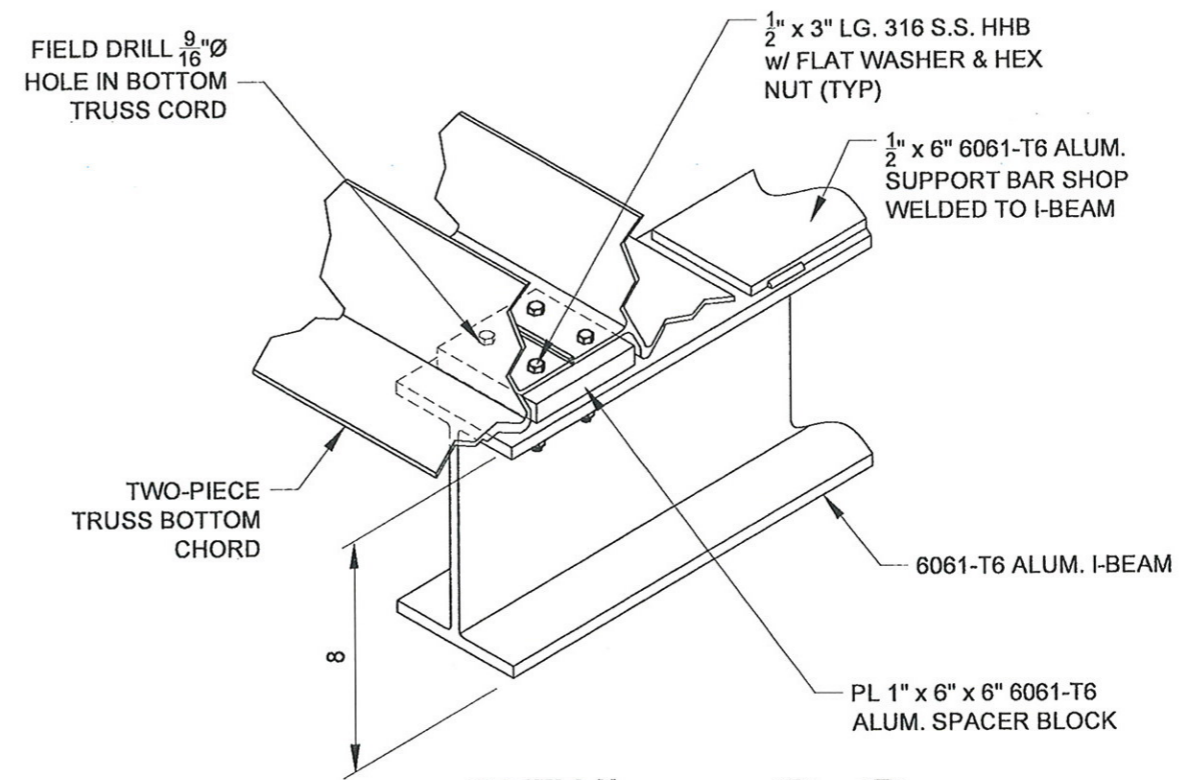




**DETAIL**  
 @ TRUSS END &  
 CHECKERED PLATE

1 1  
 01A 01B

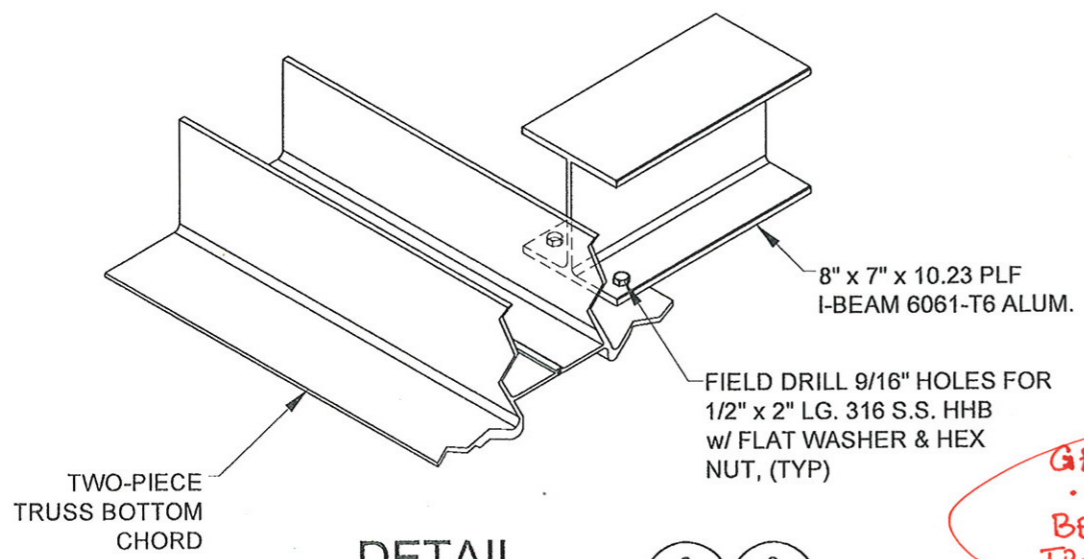
*NEW CONCRETE CORB, NOT EXISTING  
 BASIN WALL AS SHOWN. ALSO,  
 VERIFY HOW CORB IS DETAILED  
 TO NOT BE LOAD BEARING.*



**DETAIL**  
 @ CENTER MECHANISM  
 SUPPORT BEAMS

2 2  
 02A 02B

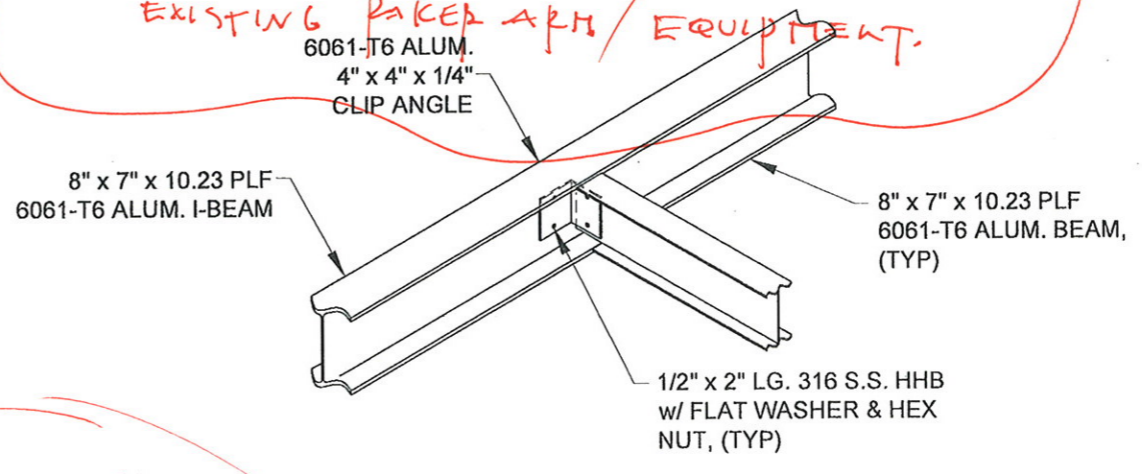
*DROP BEAM FRAMING MUST BE VERIFIED  
 IN FIELD TO CONFIRM NO CONFLICT W/  
 EXISTING PAPER ART/ EQUIPMENT.*



**DETAIL**  
 SUPPORT STRUCTURE  
 @ DOUBLE LEAF HATCHES

3 3  
 02A 02B

*GENERAL NOTE:  
 - VERIFY DUCT LAYOUT HAS  
 BEEN COORDINATED WITH  
 TRUSS WEB LAYOUT*



**DETAIL**  
 @ CENTER MECHANISM  
 SUPPORT STRUCTURE

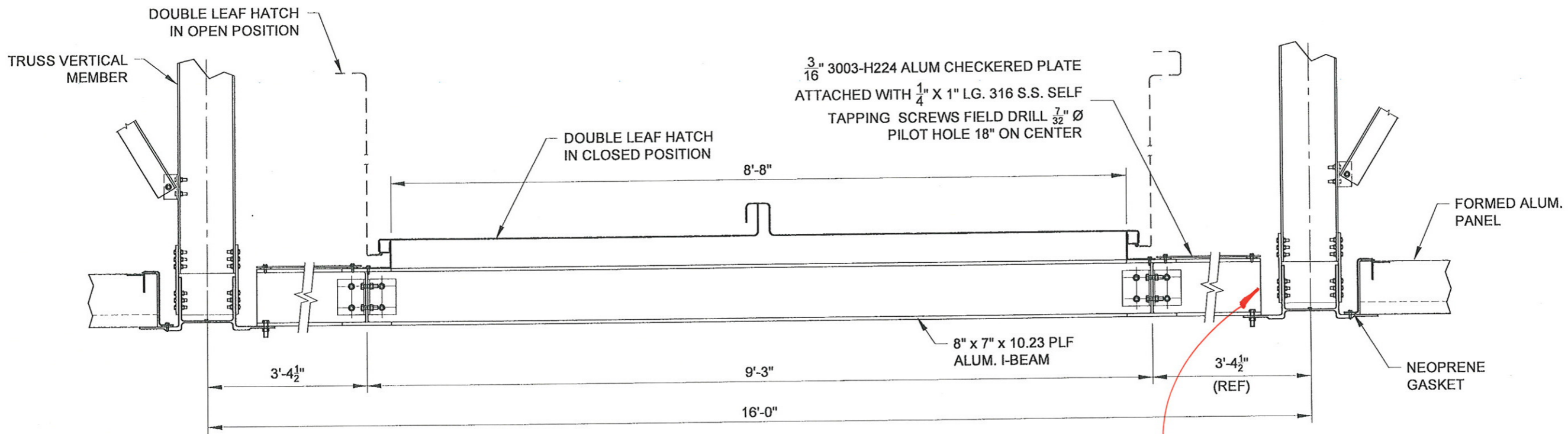
4 4  
 02A 02B

**ISSUED FOR  
 APPROVAL**

 <b>CONSERVATEK INDUSTRIES, INC.</b> 498 LOOP 336 EAST • CONROE, TEXAS 77305		THESE DRAWINGS ARE THE PROPERTY OF CONSERVATEK. THE INFORMATION CONTAINED ON THESE DRAWINGS IS PROPRIETARY AND IS NOT TO BE REPRODUCED OR DISTRIBUTED WITHOUT WRITTEN PERMISSION OF CONSERVATEK.			
		Drawn By	Checked By	Date	Scale
Rev. No.	Chk.	Rev.	Contract No.	Series	Dwg No.
	JJG	MLA	0209047-48	NTS	A
Location: <b>ODOROUS AIR TREATMENT EXPANSION          EUGENE, OR</b>		Dwg. Title: <b>TRUSS SUPPORTED FPFC          LAYOUT - SECTIONS &amp; DETAILS I</b>			
Rev. By	Chk.	Revision Comment	Date	Date	
				6/20/09	
			Drawing Issued For		
			APPROVAL		

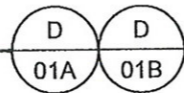




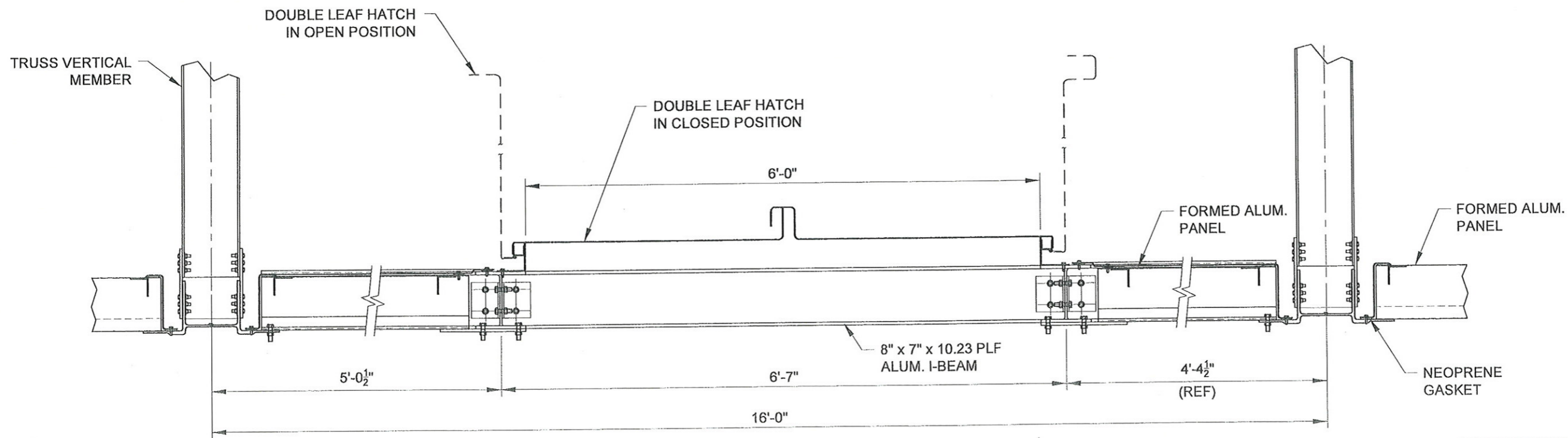


**SECTION**

104" x 128" DOUBLE LEAF HATCH @ CENTER BAY

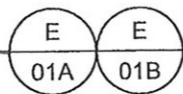


How is raised framing at hatch sealed?



**SECTION**

72" x 72" DOUBLE LEAF HATCH BETWEEN TRUSSES # 2 & # 3



ISSUED FOR APPROVAL

**CONSERVATEK**  
 CONSERVATEK INDUSTRIES, INC.  
 498 LOOP 336 EAST CONROE, TEXAS 77305

THESE DRAWINGS ARE THE PROPERTY OF CONSERVATEK. THE INFORMATION CONTAINED ON THESE DRAWINGS IS PROPRIETARY AND IS NOT TO BE REPRODUCED OR DISTRIBUTED WITHOUT WRITTEN PERMISSION OF CONSERVATEK.

Drawn By: J.J.G.  
 Checked By: M.L.H.  
 Date: 06/25/09  
 Scale: NTS  
 Rev: 0  
 Contract No: 209047-48  
 Series: A  
 Dwg No: 03D

Dwg. Title:		TRUSS SUPPORTED FPFC LAYOUT - SECTIONS & DETAILS IV	
Location:		ODOROUS AIR TREATMENT EXPANSION EUGENE, OR	
Rev. By	Chk.	Date	Date
			6/30/09
Revision Comment		Drawing Issued For	
		APPROVAL	

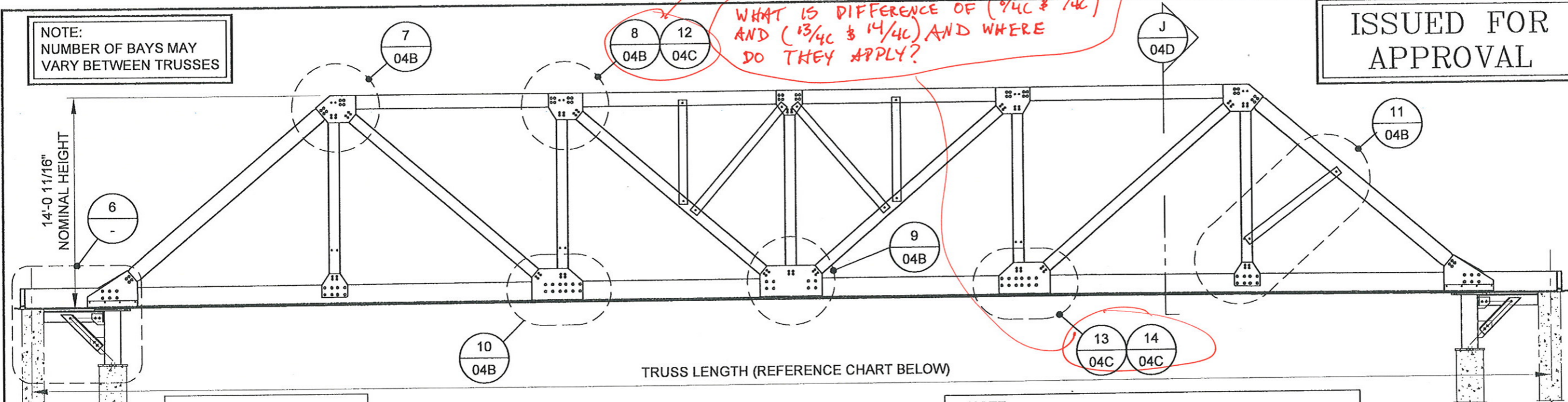




NOTE:  
NUMBER OF BAYS MAY  
VARY BETWEEN TRUSSES

ISSUED FOR  
APPROVAL

WHAT IS DIFFERENCE OF (7/4C & 12/4C)  
AND (13/4C & 14/4C) AND WHERE  
DO THEY APPLY?

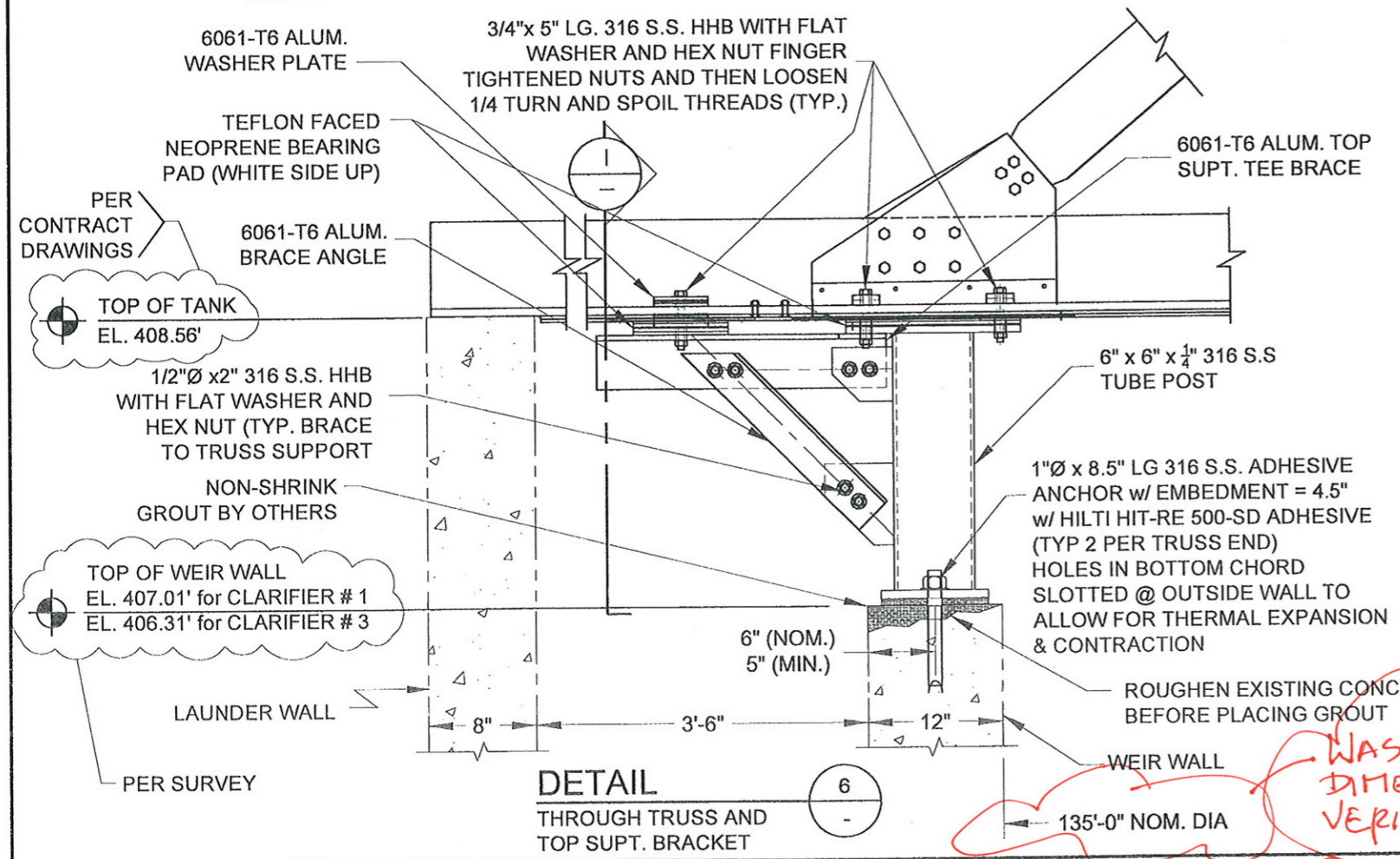


TRUSS LENGTH (REFERENCE CHART BELOW)

TRUSS LENGTH		
TRUSS	LENGTH	CAMBER
1	143'-10 1/8"	8 7/16"
2	136'-6-7/16"	7 7/8"
3	120'-7 5/16"	6 3/4"
4	91'-8"	4 3/4"

SECTION  
@ TRUSS

NOTE:  
1. SECTION CALL OUTS DEPICT TYPICAL CONNECTION CONFIGURATIONS ONLY, AND DO NOT REPRESENT THE FINAL FABRICATED LOCATION AND CONFIGURATION OF THE CONNECTION BEING REFERENCED.  
2. ALL EXPOSED SURFACES OF TRUSS SANDBLASTED PER NOTE 1 ON DWG. 00.



DETAIL  
THROUGH TRUSS AND  
TOP SUPT. BRACKET

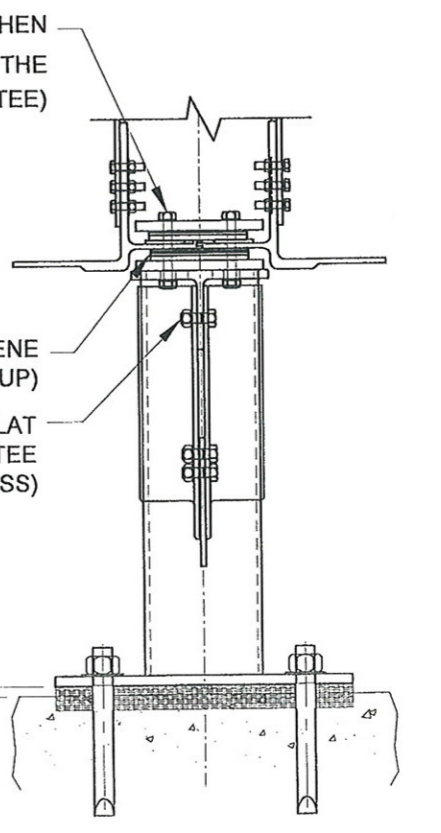
FINGER TIGHTEN NUT THEN  
LOOSEN 1/4 TURN & SPOIL THE  
THREADS. (TYP AT POST & TEE)

NON-SHRINK GROUT PROVIDES A  
LEVEL SURFACE ON WHICH TO  
MOUNT SUPPORT POSTS. TOP OF  
GROUT MUST BE AS SHOWN.

TEFLON FACED NEOPRENE  
BEARING PAD (WHITE SIDE UP)  
1/2"Ø x 2" 316 S.S. HHB WITH FLAT  
WASHER AND HEX NUT (TYP. TEE  
BRACKET TO TRUSS)

TOP OF EXISTING  
WEIR WALL

NON-SHRINK  
GROUT BY OTHERS  
(REF. DWG. 02A & 02B  
FOR SUPPORT POST  
LANDING LOCATIONS)



SECTION  
THROUGH TRUSS AND  
TOP SUPT. BRACKET

WAS THIS  
DIMENSION  
VERIFIED IN FIELD?

**CONSERVATEK**  
CONSERVATEK INDUSTRIES, INC.  
498 LOOP 336 EAST CONROE, TEXAS 77305

THESE DRAWINGS ARE THE PROPERTY OF CONSERVATEK. THE INFORMATION CONTAINED ON THESE DRAWINGS IS PROPRIETARY AND IS NOT TO BE REPRODUCED OR DISTRIBUTED WITHOUT WRITTEN PERMISSION OF CONSERVATEK.

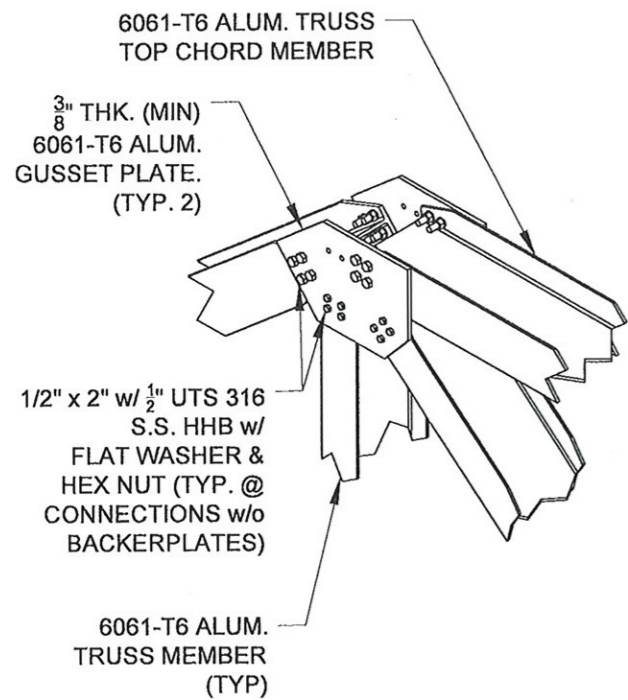
Drawn By: J JG  
Checked By: M L A  
Date: 06/25/09  
Scale: NTS  
Rev: 0  
Contract No: 209047-48  
Series: A  
Dwg No: 04A

Dwg. Title: TRUSS SUPPORTED FPFC TRUSS - SECTIONS & DETAILS I

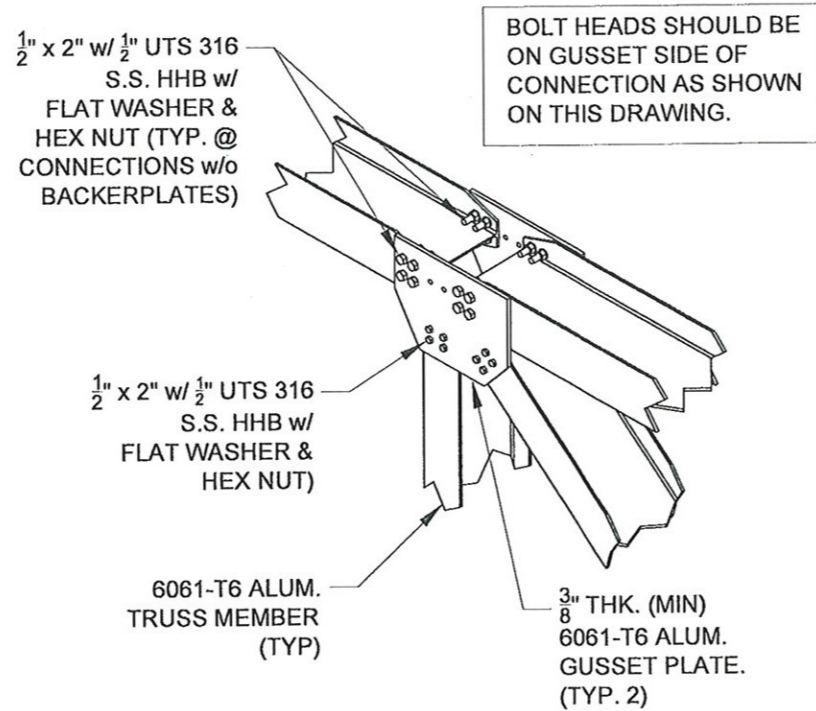
Location: ODOROUS AIR TREATMENT EXPANSION EUGENE, OR

Rev.	By	Chk.	Revision Comment	Date

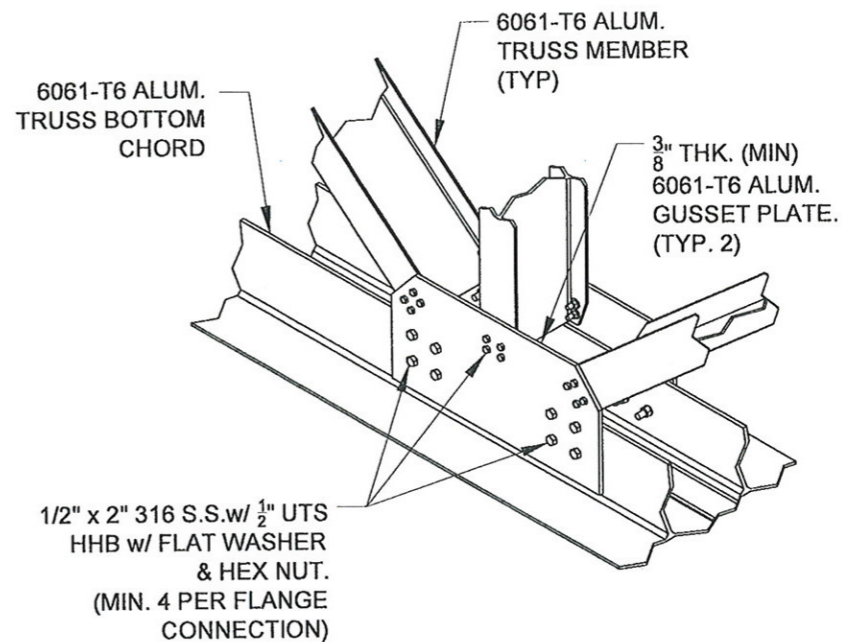
Drawing Issued For: APPROVAL



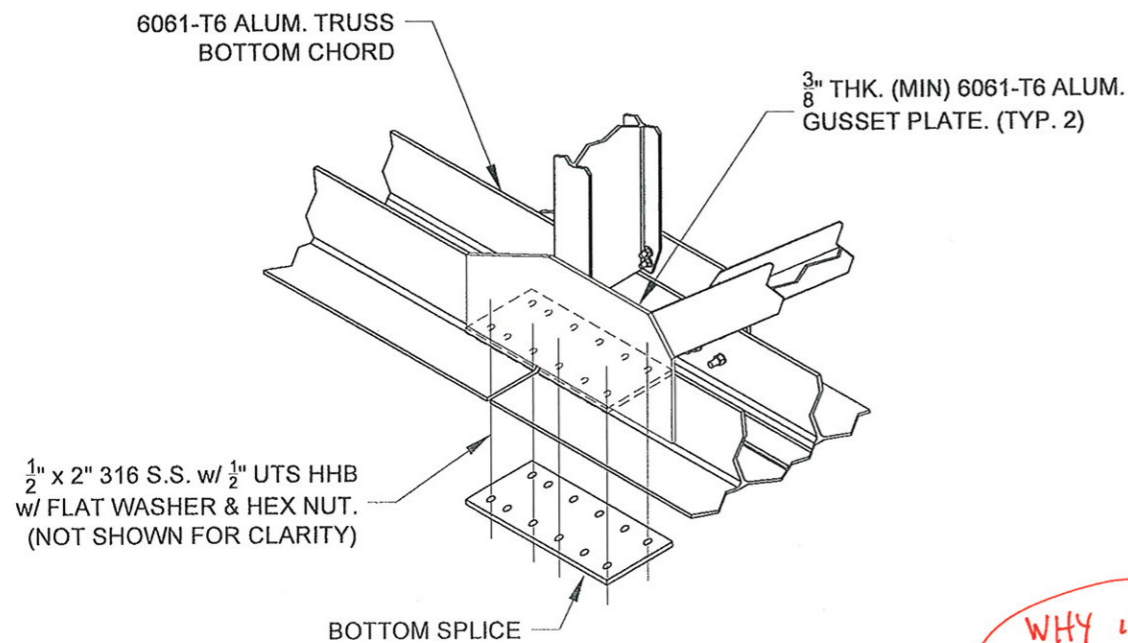
**DETAIL 7**  
TYP. @ TOP END TRUSS MEMBER CONNECTION 04A



**DETAIL 8**  
TYP. @ TOP TRUSS MEMBER CONNECTION W/O BACKER PLATES 04A

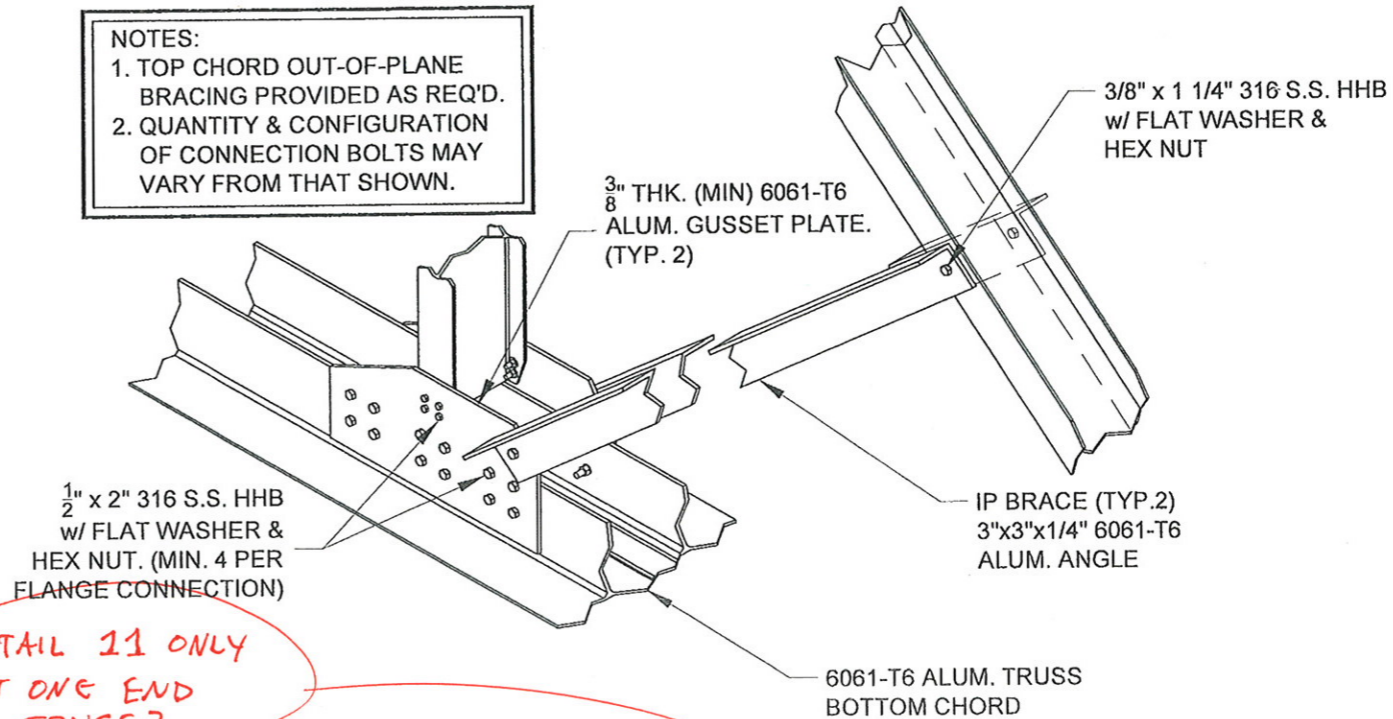


**DETAIL 9**  
TYP. @ BOTTOM CENTER TRUSS MEMBER CONNECTION 04A



**DETAIL 10**  
TYP. @ BOTTOM TRUSS CHORD SPLICE CONN. W/O BACKER PLATES 04A

**NOTES:**  
1. TOP CHORD OUT-OF-PLANE BRACING PROVIDED AS REQ'D.  
2. QUANTITY & CONFIGURATION OF CONNECTION BOLTS MAY VARY FROM THAT SHOWN.



**DETAIL 11**  
BOTTOM TRUSS CHORD CONNECTION @ IN-PLANE BRACING 04A

WHY IS DETAIL 11 ONLY SHOWN AT ONE END OF THE TRUSS?  
(ALSO SEE DWG 04A)

ISSUED FOR APPROVAL

**CONSERVATEK**  
CONSERVATEK INDUSTRIES, INC.  
498 LOOP 336 EAST • CONROE, TEXAS 77305

THESE DRAWINGS ARE THE PROPERTY OF CONSERVATEK. THE INFORMATION CONTAINED ON THESE DRAWINGS IS PROPRIETARY AND IS NOT TO BE REPRODUCED OR DISTRIBUTED WITHOUT WRITTEN PERMISSION OF CONSERVATEK.

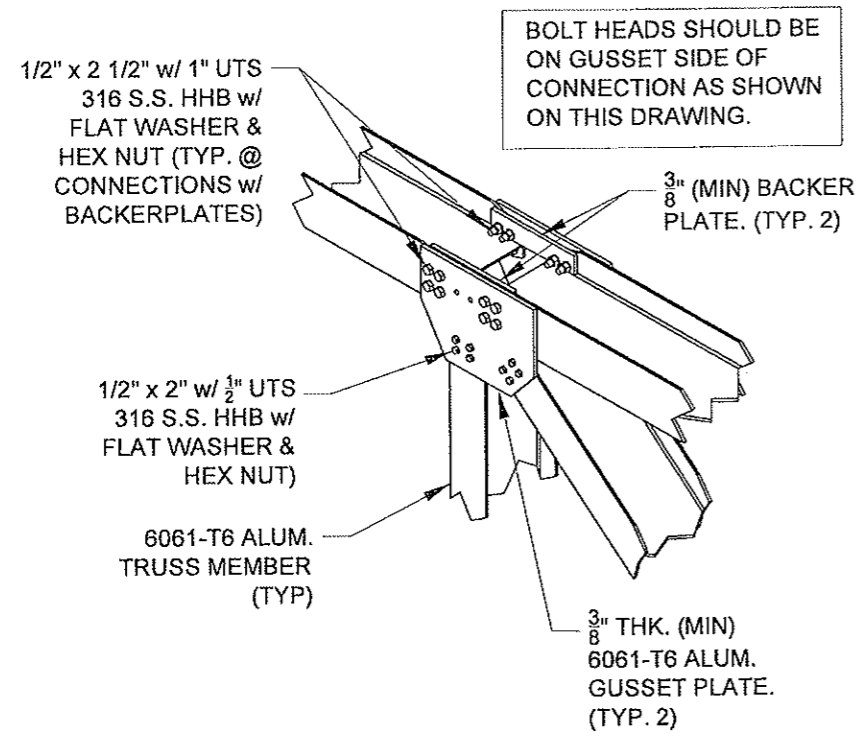
Drawn By: J.J.G. Checked By: M.L.H. Date: 06/25/09 Scale: NTS Rev: 0 Contract No.: 209047-48 Series: A Dwg No.: 04B

Dwg. Title: TRUSS SUPPORTED FPFC TRUSS - SECTIONS & DETAILS II

Location: ODOROUS AIR TREATMENT EXPANSION EUGENE, OR

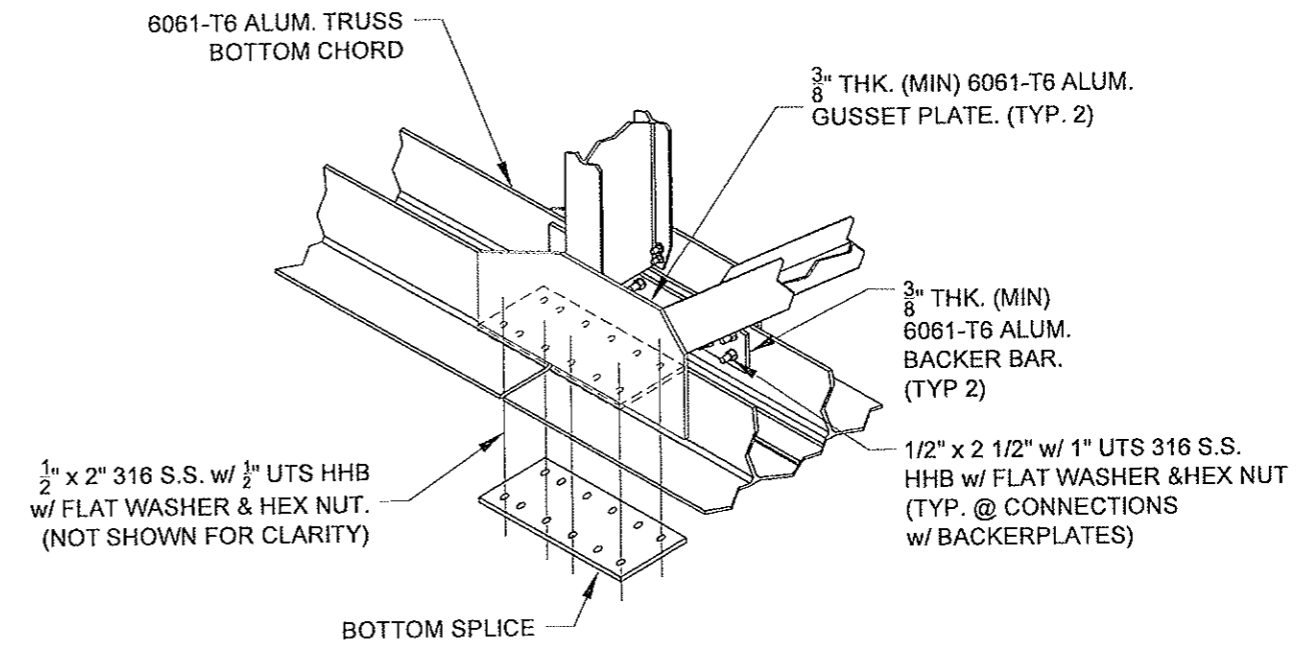
Rev.	By	Chk	Revision Comment	Date

Drawing Issued For: APPROVAL

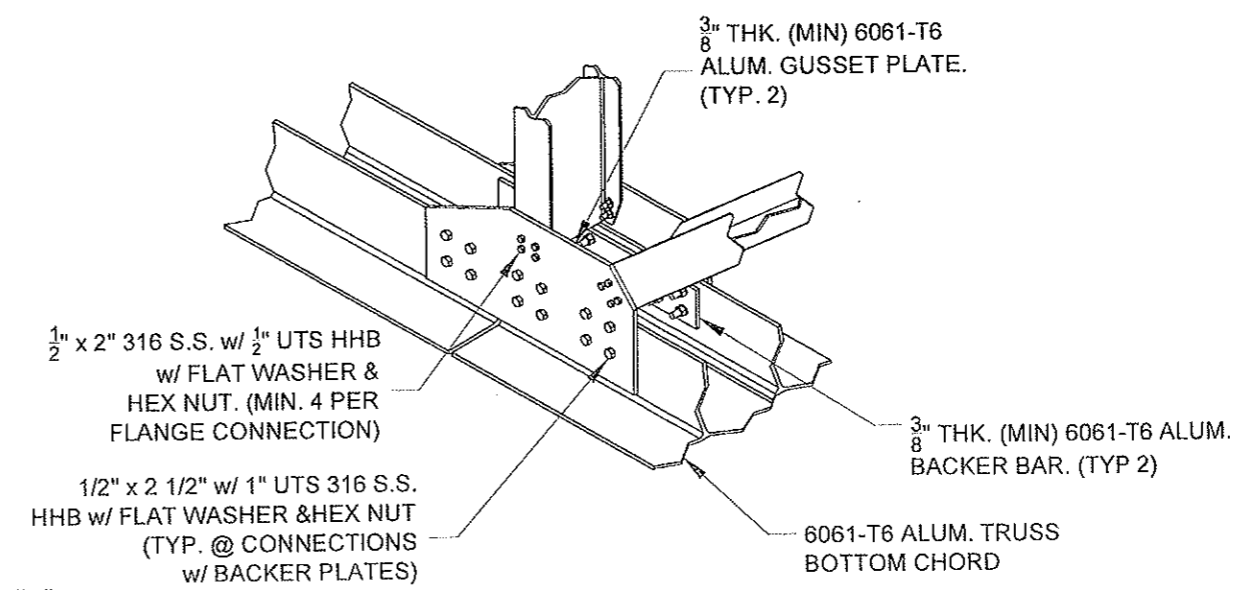


BOLT HEADS SHOULD BE ON GUSSET SIDE OF CONNECTION AS SHOWN ON THIS DRAWING.

**DETAIL** 12  
TYP. @ TOP TRUSS MEMBER CONNECTION w/ SPLICE PLATES 04A



**DETAIL** 13  
TYP. @ BOTTOM TRUSS CHORD SPLICE CONN. w/ BACKER BAR 04A



**DETAIL** 14  
TYP. @ BOTTOM TRUSS CHORD GUSSET CONN. w/ BACKER BAR 04A

NOTES:  
1. TOP CHORD OUT-OF-PLANE BRACING PROVIDED AS REQ'D.  
2. QUANTITY & CONFIGURATION OF CONNECTION BOLTS MAY VARY FROM THAT SHOWN.

ISSUED FOR APPROVAL

**CONSERVATEK**  
CONSERVATEK INDUSTRIES, INC.  
498 LOOP 336 EAST • CONROE, TEXAS 77305

THESE DRAWINGS ARE THE PROPERTY OF CONSERVATEK. THE INFORMATION CONTAINED ON THESE DRAWINGS IS PROPRIETARY AND IS NOT TO BE REPRODUCED OR DISTRIBUTED WITHOUT WRITTEN PERMISSION OF CONSERVATEK.

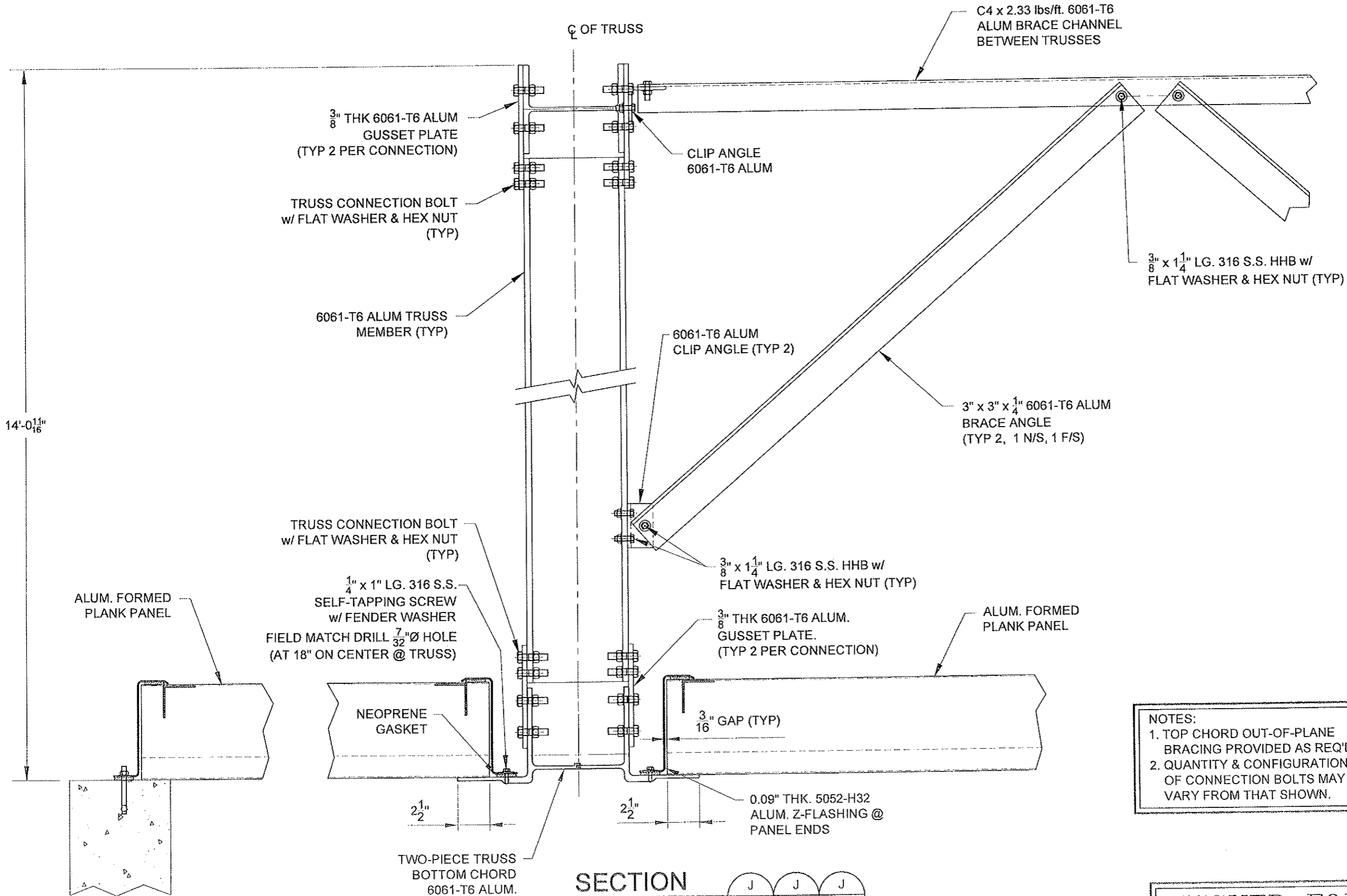
Drawn By: JJJ  
Checked By: M.L.L.  
Date: 06/25/09  
Scale: NTS  
Rev: 0  
Contract No.: 209047-48  
Series: A  
Dwg No.: 04C

Dwg. Title: TRUSS SUPPORTED FPFC TRUSS - SECTIONS & DETAILS III

Location: ODOROUS AIR TREATMENT EXPANSION EUGENE, OR

Rev.	By	Chk.	Revision Comment	Date

Drawing Issued For: APPROVAL  
Date: 6/25/09



**SECTION**  
 TYPICAL TRUSS SECTION w/ CROSS BRACING

J 01A   J 01B   J 04A

NOTES:  
 1. TOP CHORD OUT-OF-PLANE BRACING PROVIDED AS REQ'D.  
 2. QUANTITY & CONFIGURATION OF CONNECTION BOLTS MAY VARY FROM THAT SHOWN.

**ISSUED FOR APPROVAL**

**CONSERVATEK**  
 CONSERVATEK INDUSTRIES, INC.  
 498 LOOP 336 EAST, CONROE, TEXAS 77305

THESE DRAWINGS ARE THE PROPERTY OF CONSERVATEK THE INFORMATION CONTAINED ON THESE DRAWINGS IS PROPRIETARY AND IS NOT TO BE REPRODUCED OR DISTRIBUTED WITHOUT WRITTEN PERMISSION OF CONSERVATEK.

Drawn By: J.J.G.  
 Checked By: M.L.A.  
 Date: 06/25/09  
 Scale: NTS  
 Rev: 0  
 Contract No: 209047-48  
 Series: A  
 Dwg No: 04D

Dwg. Title: TRUSS SUPPORTED FPFC TRUSS - SECTIONS & DETAILS IV

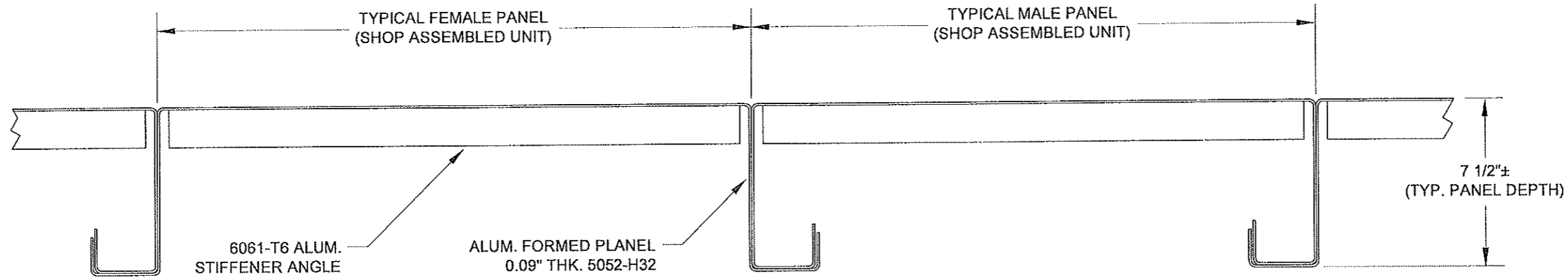
Location: ODOROUS AIR TREATMENT EXPANSION  
 EUGENE, OR

Rev.	By	Chk	Revision Comment	Date	Date
					6/30/09

Drawing issued For: APPROVAL



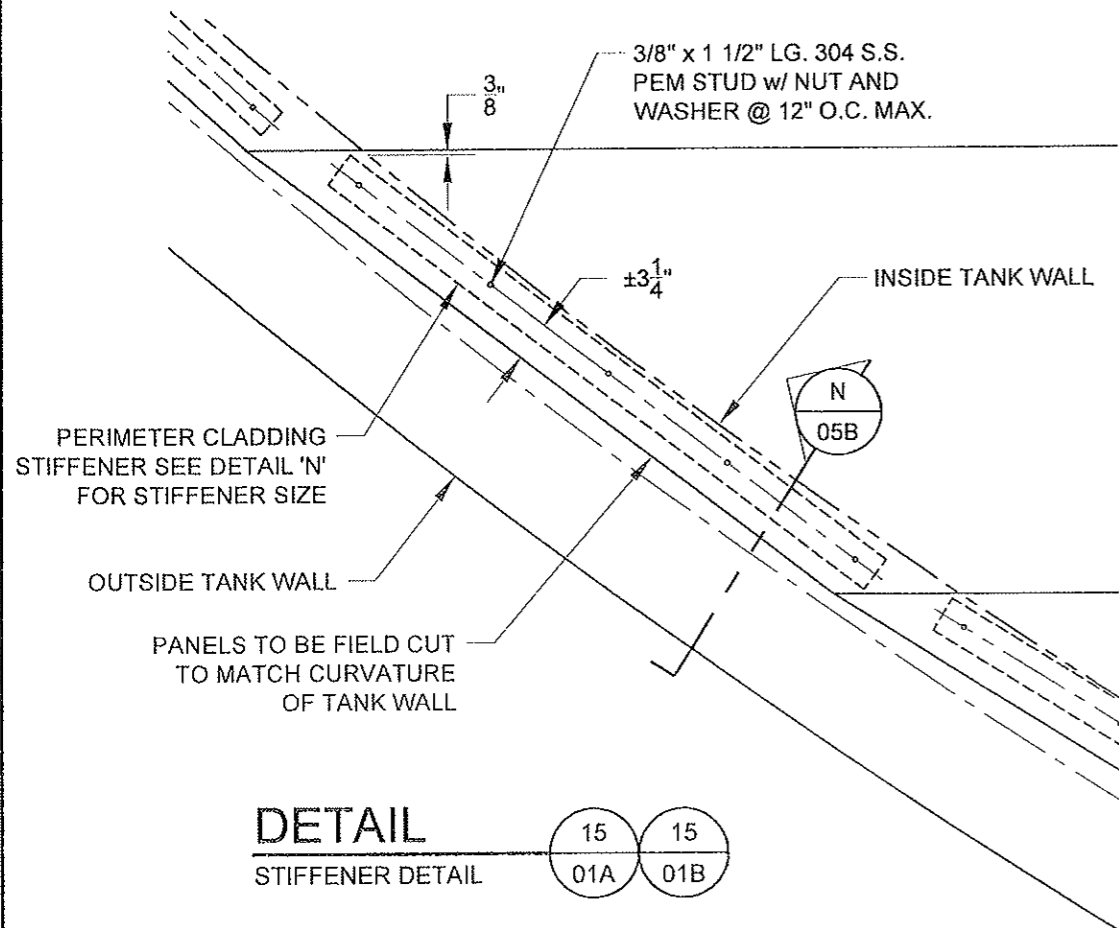




**SECTION**  
TYPICAL SECTION THROUGH PANELS

M 01A    M 01B

NOTE:  
1. PANEL WIDTHS MAY VARY BASED ON PANEL SPAN.

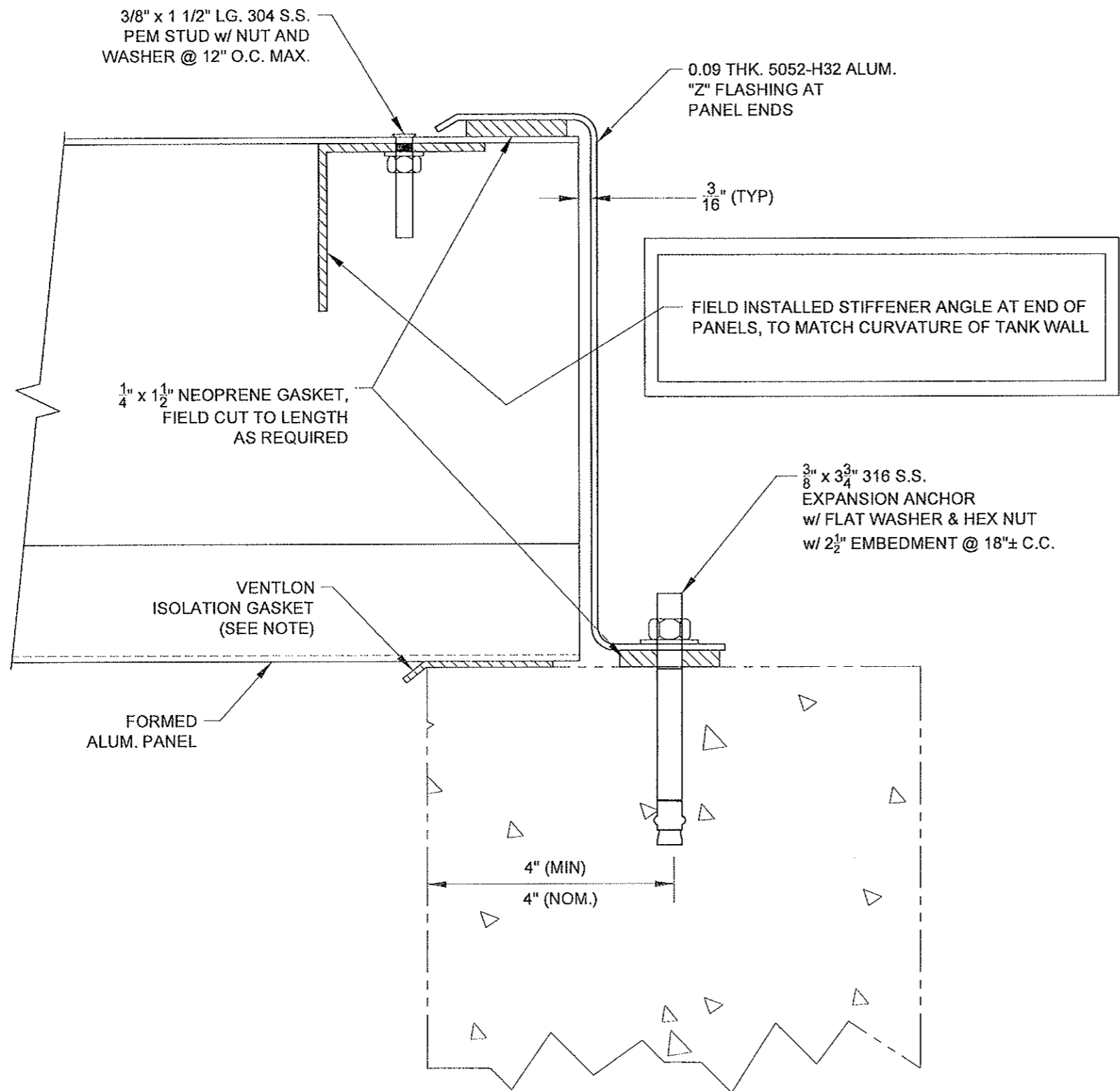


**DETAIL**  
STIFFENER DETAIL

15 01A    15 01B

ISSUED FOR APPROVAL

 <b>CONSERVATEK</b> CONSERVATEK INDUSTRIES, INC. 498 LOOP 336 EAST • CONROE, TEXAS 77305		THESE DRAWINGS ARE THE PROPERTY OF CONSERVATEK. THE INFORMATION CONTAINED ON THESE DRAWINGS IS PROPRIETARY AND IS NOT TO BE REPRODUCED OR DISTRIBUTED WITHOUT WRITTEN PERMISSION OF CONSERVATEK.							
		Drawn By J J G	Checked By M L K	Date 06/25/09	Scale NTS	Rev. 0	Contract No. 209047-48	Series A	Dwg No. 05A
Dwg. Title: <b>TRUSS SUPPORTED FPFC FLAT COVER - SECTIONS &amp; DETAILS I</b>		Location: <b>ODOROUS AIR TREATMENT EXPANSION EUGENE, OR</b>						Date 6/30/09	
Rev. By	Chk.	Revision Comment	Date	Drawing Issued For	APPROVAL				



NOTE:  
 1. FIELD CUT VENTLON ISOLATION GASKET, PLACE BETWEEN ALUM. AND CONCRETE.

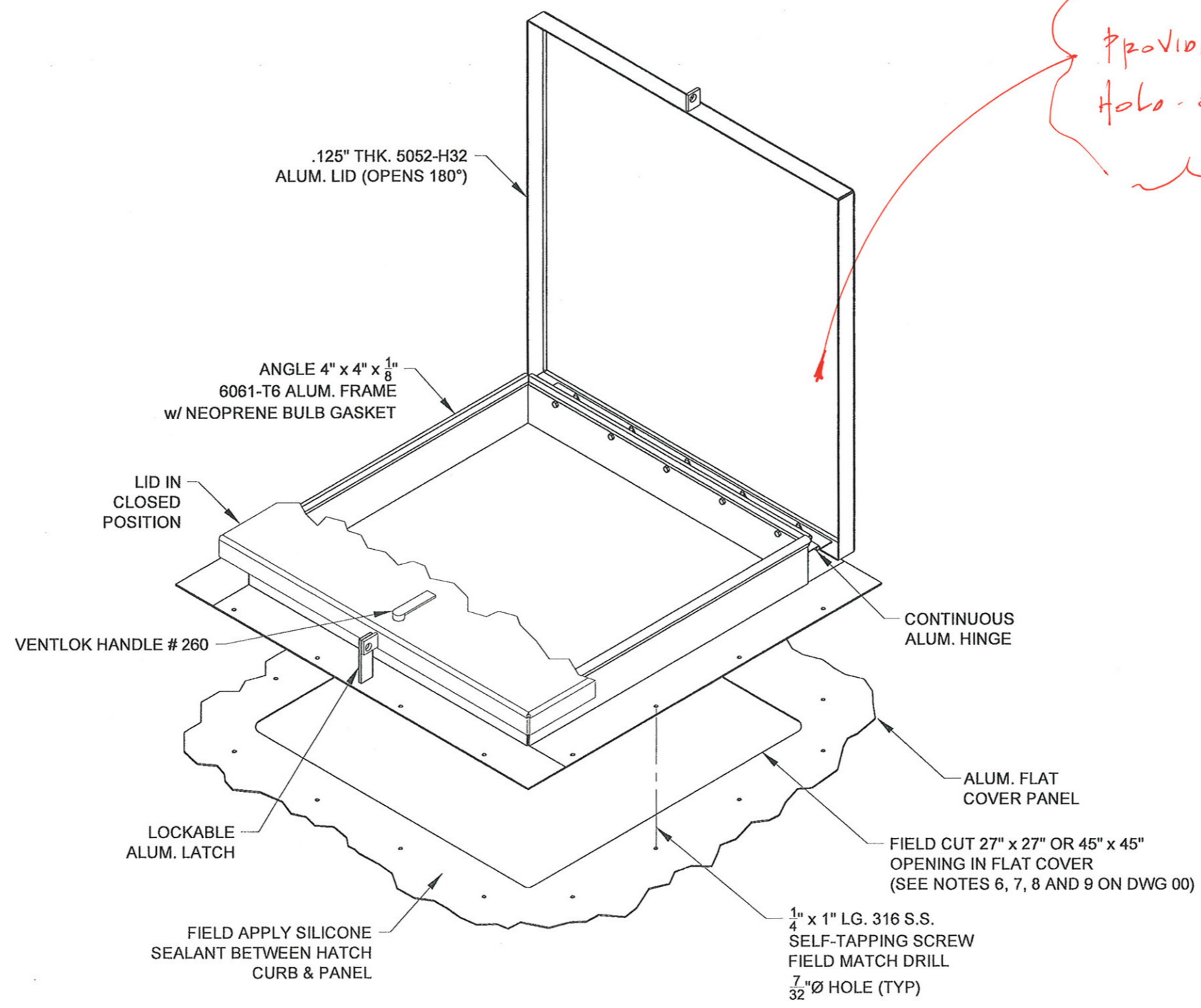
SECTION  
 PANEL AT BASIN WALL

N
N
N  
 01A 01B 05A

ISSUED FOR APPROVAL

<b>CONSERVATEK</b> CONSERVATEK INDUSTRIES, INC. 498 LOOP 336 EAST • CONROE, TEXAS 77305		THESE DRAWINGS ARE THE PROPERTY OF CONSERVATEK. THE INFORMATION CONTAINED ON THESE DRAWINGS IS PROPRIETARY AND IS NOT TO BE REPRODUCED OR DISTRIBUTED WITHOUT WRITTEN PERMISSION OF CONSERVATEK.		Drawn By J J G	Checked By M J M	Date 06/25/09	Scale NTS	Rev. 0	Contract No. 209047-48	Series A	Dwg No. 05B
TRUSS SUPPORTED FPFC FLAT COVER - SECTIONS & DETAILS II		Location: ODOROUS AIR TREATMENT EXPANSION EUGENE, OR									
Rev. By	Chk.	Revision Comment	Date	Drawing Issued For APPROVAL							





**DETAIL**

16	16
01A	01B

SQUARE HATCH  
 (27 x 27 QTY. 67 PER TANK)  
 (45 x 45 QTY. 3 PER TANK)

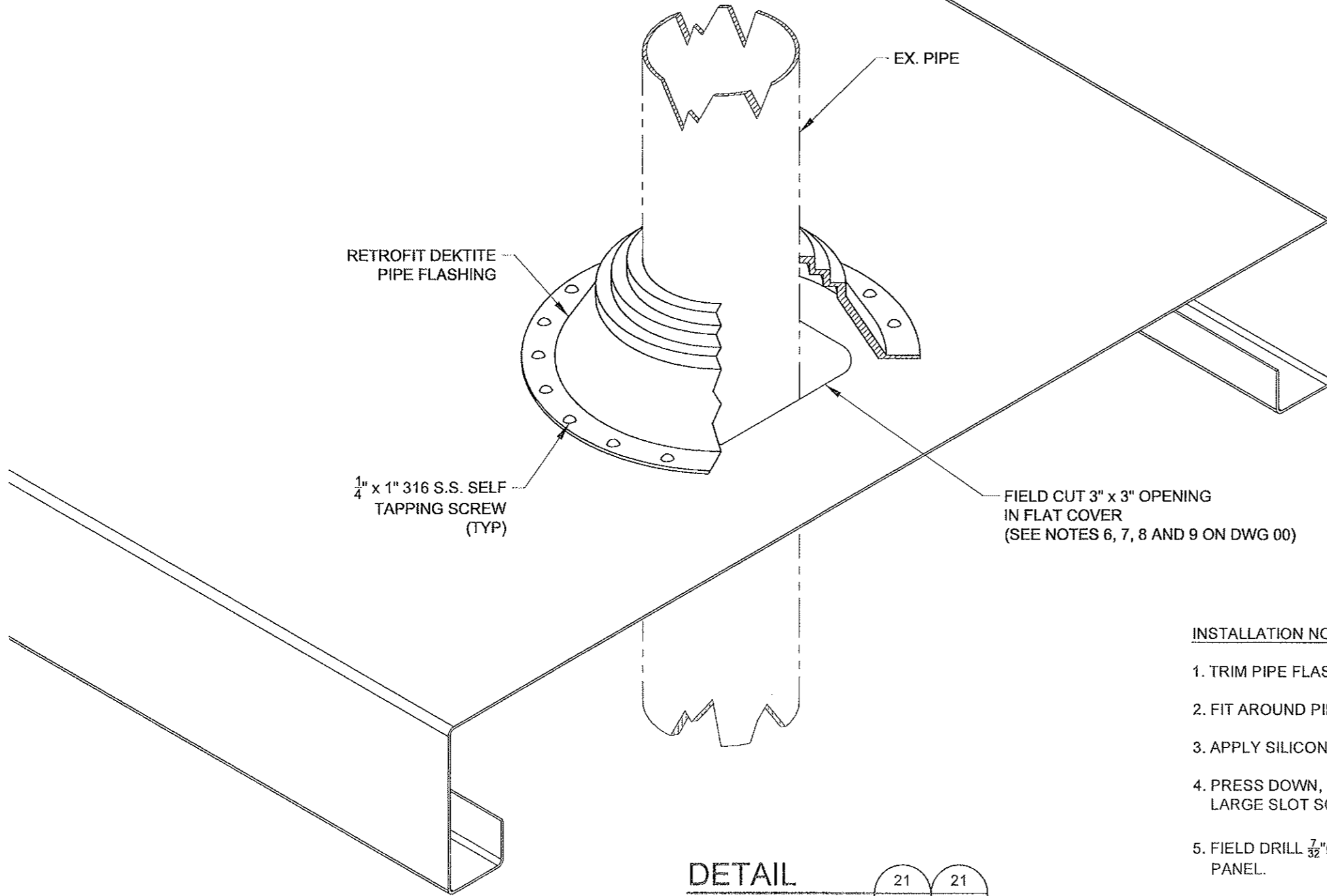
ISSUED FOR APPROVAL

<b>CONSERVATEK</b> CONSERVATEK INDUSTRIES, INC. 498 LOOP 336 EAST • CONROE, TEXAS 77305		THESE DRAWINGS ARE THE PROPERTY OF CONSERVATEK. THE INFORMATION CONTAINED ON THESE DRAWINGS IS PROPRIETARY AND IS NOT TO BE REPRODUCED OR DISTRIBUTED WITHOUT WRITTEN PERMISSION OF CONSERVATEK.	
Drawn By J J G	Checked By M L W	Date 06/25/09	Scale NTS
Rev.	Contract No.	Series	Dwg No.
0	209047-48	A	06A
TRUSS SUPPORTED FPFC TOP MOUNT HATCH DETAIL I		Location: ODOROUS AIR TREATMENT EXPANSION EUGENE, OR	
Rev.	Chk.	Date	Date
			6/30/09
Revision Comment		Drawing Issued For	
		APPROVAL	









RETROFIT DEKTITE  
PIPE FLASHING

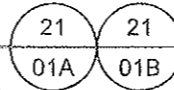
1/4" x 1" 316 S.S. SELF  
TAPPING SCREW  
(TYP)

EX. PIPE

FIELD CUT 3" x 3" OPENING  
IN FLAT COVER  
(SEE NOTES 6, 7, 8 AND 9 ON DWG 00)

**DETAIL**

2" PIPE FLASHING  
(QTY 4 PER CONTRACT)



INSTALLATION NOTES

1. TRIM PIPE FLASHING TO 20% SMALLER THAN PIPE DIAMETER.
2. FIT AROUND PIPE.
3. APPLY SILICONE SEALANT BETWEEN PIPE FLASHING AND PANEL.
4. PRESS DOWN, BENDING FLASHING TO FIT IRREGULARITIES. USE LARGE SLOT SCREW-DRIVER TO PRESS INTO TIGHT ANGLES.
5. FIELD DRILL 7/32" Ø HOLES AND USE 1/4" x 1" S.S. STS TO FASTEN TO PANEL.

ISSUED FOR  
APPROVAL

**CONSERVATEK**  
CONSERVATEK INDUSTRIES, INC.  
498 LOOP 336 EAST • CONROE, TEXAS 77305

THESE DRAWINGS ARE THE PROPERTY OF CONSERVATEK. THE INFORMATION CONTAINED ON THESE DRAWINGS IS PROPRIETARY AND IS NOT TO BE REPRODUCED OR DISTRIBUTED WITHOUT WRITTEN PERMISSION OF CONSERVATEK.

Drawn By	JUG	Checked By	<i>MLM</i>	Date	06/25/09	Scale	NTS	Rev.	0	Contract No.	209047-48	Series	A	Dwg No.	08A
----------	-----	------------	------------	------	----------	-------	-----	------	---	--------------	-----------	--------	---	---------	-----

Dwg. Title:  
**TRUSS SUPPORTED FPFC  
PIPE FLASHING DETAIL**

Location:  
**ODOROUS AIR TREATMENT EXPANSION  
EUGENE, OR**

Rev.	By	Chk.	Revision Comment	Date